



On-line PICASSO PROJECT

**Comprehensive Catalogue Raisonné
Prof. Dr. Enrique Mallen**

1923



Femme assise. Paris. [December/1922] 1-January/1923. Gouache on cardboard. [20,9 x 17,4] 20,8 x 17,3 cm. Allen Memorial Art Museum, Oberlin College, Oberlin, OH. (Inv AMAM.1944.24). R. T. Miller, Jr. Fund, 1944.

OPP.23:017; PP.23:001; Z.VI:1401; JR.62*:4.26; WW.91:290p

Composition pour un bal de Mardi-Gras. Paris. [Early]/1923 [1928]. Oil on canvas. 294 x 214 cm. Chrysler Museum of Art. (Inv 71.689). Gift of Walter P. Chrysler, Jr.

OPP.23:245; MJ.55*:n/a; RP.60*:265





Les amoureux. Paris. Early/1923. Oil on linen. 130,2 x 97,2 cm. National Gallery of Art, Washington, DC. (Inv 1963.10.192). Chester Dale Collection.

OPP.23:004; P.III:1330; PP.23:030; Z.V:14; AB.30*:72A; AC.46:205; AC.81:109p; CG.93:142; CH.23b*:n/a; CH.30a*:1; CH.30e*:n/a; CH.32c*:n/a; CH.43*:55; CM.29b*:n/a; DC.87:308; EC.02:393; FM.84:21p; GP.32*:133; JC.40:119p; JC.59:57p; JR.07:n/a; JR.96:404p; MF.96:101p; MM.07:164p; NH.94:43p; NY.23a*:12; NY.27c*:25; NY.31d*:25; OD.96:14p; PA.24a*:n/a; TL.95:21p; TV.06:177p; UP.00:522; UW.88:52a; WA.52b*:55; WA.65b*:n/a; WA.78c*:29; WA.80a*:69; WW.91:291p

Arlequin, les mains croisées (Le peintre Jacint Salvadó). Paris. Early/1923. Oil on canvas. 129 x 96 cm. Museum Ludwig, Köln. (Inv ML.01434). Schenkung 06/27/94. Formerly Wright Ludington Collection.

OPP.23:006; P.III:1341; PP.23:038; Z.V:135; BS.55:257; DK.61*:16; FC.15:88p; KZ.32*:133; LB.58:66p; OD.13:373p; WO.92*:31; WW.91:296p





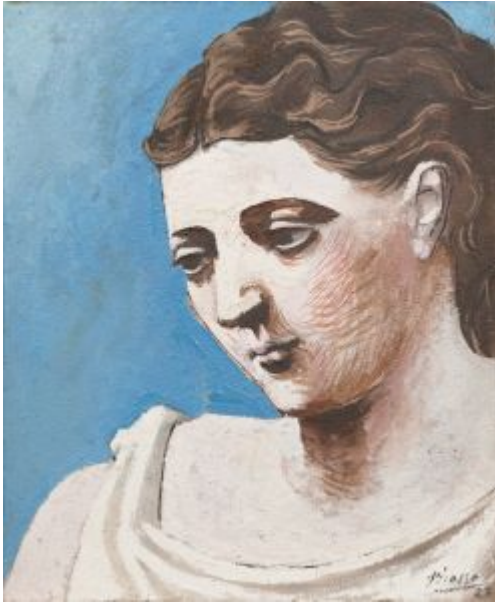
Arlequin assis (Le peintre Jacint Salvadó). Paris. Early/1923. Oil on canvas. 130,5 x 97 cm. Private collection. Formerly Stavros S. Niarchos Collection, Paris; Mr. Charles Im Obersteg Collection, Geneva.

OPP.23:007; P.III:1340; PP.23:036; Z.V:37; AH.13:37; CG.93:145; GC.96:187p; JL.71:27p; MM.67:32; MR.53:79p; NY.23a*:n/a; ON.66:25p; WW.91:296p

Portrait d'Olga (Olga pensive). Paris. Early/1923. Pastel & black pencil on paper. 105 x 74 cm. Musée Picasso, Paris. Dation 1979.

OPP.23:009; MPP:993; P.III:1303; PP.23:019; Z.V:38; AC.81:46p; DC.87:303; GB.87:111; GC.07:66p; GR.90:26p; JB.08:121p; JC.40:122p; JR.07:n/a; LM.06:35; OW.02:3; OW.03:3; OW.04:3; OW.13:164p; PA.17b*:108; PA.79a*:497; PD.09:210p; SD.05*:46; TY.03*:n/a; UP.00:530; WR.96:325p; WW.91:295p





Tête de femme. Paris. Early/1923. Oil & sand on canvas. 46 x 38 cm. Artizon Museum, Tokyo. Ishibashi Foundation.

OPP.23:010; PP.23:006; Z.V:45; WW.91:289p

Femme assise en chemise. Paris. Early/1923. Oil on canvas [Overlayer of *Femme assise en chemise*]. [92,1] 92 x 73 cm. Tate Modern, Liverpool. (Inv N04719). C. Frank Stoop Bequest, 1933.

OPP.23:016; P.III:1302; PP.23:007; Z.V:3;
BR.30c*:48; BS.12*:58; BS.55:256; JC.59:50p;
JC.98*:216; JC.98*:216; JL.66*:127; LO.70d*:122;
LO.90c:270p; MA.22a*:112; MD.02*:161p;
NH.94:40p; RO.17*:171; RP.60*:105; RP.81:10.4;
RS.88:62p; TI.71:24; UP.00:525; WW.91:290p





Arlequin au miroir. Paris. Early/1923. Oil on canvas [Overlayer of *Arlequin au miroir* and *Arlequin au miroir*]. 100 x 81 cm. Museo Thyssen-Bornemisza, Madrid. (Inv 709:1979.87). Formerly Thyssen-Bornemisza Foundation, Lugano-Castagnola.

OPP.23:019; P.III:1433; PP.23:034; Z.V:142; BW.03:20; CG.08*:141p; GD.11:22p; JC.98*:223; JM.93:67p; LO.90c:271p; MA.17b:57p; MA.22a*:74; MA.23c*:16; MM.07*:71; RO.17*:140; RS.88:65p; TL.95*:13; UP.00:520; UW.88:56b; WW.91:294p

Portrait d'Olga. Paris. Early/1923. Oil on linen [canvas]. [100 x 81] 100,3 x 82 cm. National Gallery of Art, Washington, DC. (Inv 1963.10.194). Chester Dale Collection.

OPP.23:020; P.III:1307; PP.23:016; Z.V:29; CH.23b*:n/a; CH.43*:54; GP.96:148p; JC.40:123p; JL.71:236p; NY.23a*:14; NY.31a*:8; NY.31e*:27; OD.96:53p; PA.24a*:n/a; RP.91:30; WA.52b*:54; WA.65b*:n/a; WA.78c*:30; WW.91:295p





Arlequin assis (Le peintre Jacint Salvadó en arlequin).

Paris. Early/1923. Oil on canvas. 130 x 97 cm. Musée National d'Art Moderne, Centre Georges Pompidou, Paris. (Inv AM.4313.P). Donation Baronne Eva Gourgaud, 1965.

OPP.23:021; P.III:1334; PP.23:035; Z.V:17; AH.13:36; CG.93:135; DB.89:91p; DC.87:307; DO.07:20p; EC.02:342; EM.96:207p; FC.15:88p; GB.87:99; JC.40:125p; JC.98*:222; JF.94a:51; JL.06:135p; JR.07:n/a; LP.99:113p; NH.94:39p; NM.08:10; NY.23a*:16; PA.24a*:n/a; PA.36c*:n/a; PA.71b*:n/a; PC.77:230p; PD.09:224p; RR.09:73p; UP.00:518; WR.80*:240p; WR.96:326p; WW.91:297p; YB.08:22p

Saltimbanque aux bras croisés. Paris. Early/1923. Oil on canvas. 130,6 x 97,7 cm. Artizon Museum, Tokyo. Ishibashi Foundation.

OPP.23:028; P.III:1326; PP.23:033; Z.V:15; CG.93:143; DC.87:310; GP.32*:134; JM.93:65p; KZ.32*:126; NY.23a*:n/a; PA.24a*:n/a; RO.17*:141; RS.88:55p; TO.96b*:164; UP.00:524; WA.80a*:68





Femme assise en bleu et rose. Paris. Early/1923. Oil & sand on canvas. 100 x 81 [80,5] cm. Kunstmuseum Bern. Donation Hilde Thannhauser, 1978.

OPP.23:029; P.III:1299; PP.23:004; Z.V:2; KB.01*:81; WR.96:56p

Femme et enfant. Paris. [Early]/1923. Lithograph on wove paper, edition 50. [28 x 38] 19,5 x 29 cm. Kunstmuseum Bern. Herman und Margit Rupf-Stiftung. Also Sotheby's. #205, L06160, 03/28/06.

OPP.23:050; B.I:66; Ba:236; FM.70:16; UW.88*:85; WS.95a*:77





Femme dans un fauteuil et visage féminin. Paris. Early/1923.
Pencil in sketchbook. 15,3 x 23 cm. Musée Picasso, Paris. Sketchbook
203. Jacqueline Roque Picasso Collection. Dation 1990.

OPP.23:053; MPP:1990.103.19r; PP.23:009; Z.V:150; AG.86:63;
BL.96:21.19r; GR.90*:100; PD.06*:128p

Nu féminin dans un fauteuil. Paris. [1917-1924]
Early/1923. Pencil in sketchbook. [16 x 24] 15,3 x 23 cm.
Musée Picasso, Paris. Sketchbook 203. Jacqueline Roque
Picasso Collection. Dation 1990.

OPP.23:129; MPP:1990.103.21r; PP.23:010; Z.V:151;
AG.86:63; BL.96:21.21r; GR.90*:100





Femme et enfant (Pour Monsieur Paul Lachenal). Paris. Early/1923. Pen. 23 x 31 cm. Private collection. Formerly François Paul Lachenal Collection.

OPP.23:159; PP.23:023; UW.88*:49

Femme assise dans un fauteuil rouge. Paris. [Early]/1923. Oil on canvas [Oic]. 100 x 81 cm. Edward James Foundation, West Dean, Sussex.

OPP.23:162; P.III:1419; PP.23:008; Z.V:140; RP.60*:106





Arlequin assis (Le peintre Jacint Salvadó). Paris. [Early]/1923. Oil on canvas. 130,5 x 97 cm. Kunstmuseum Basel. (Inv G.1967.9). Permanent loan of the City of Basel, 1967.

OPP.23:164; P.III:1335; PP.23:037; Z.V:23; AH.13*:48; CG.87:77; CG.92:202; CG.93:144; DC.87:311; FC.15*:6; GB.87:100; JF.96:89p; KB.01:77; MF.95:45; NY.23a*:15; PA.24a*:n/a; PD.09:225p; PD.65:129p; TI.71:28; TL.95:23p; UP.00:519; WR.80*:241p; WR.96:327p; WW.91:296p

Arlequin au miroir. Paris. Early/1923. X-radiograph of oil on canvas [Underlayer of *Arlequin au miroir*]. [100,3 x 81,3] 100 x 81 cm. Museo Thyssen-Bornemisza, Madrid. (Inv 709:1979.87). Formerly Thyssen-Bornemisza Foundation, Lugano-Castagnola.

OPP.23:169; TL.95:35p





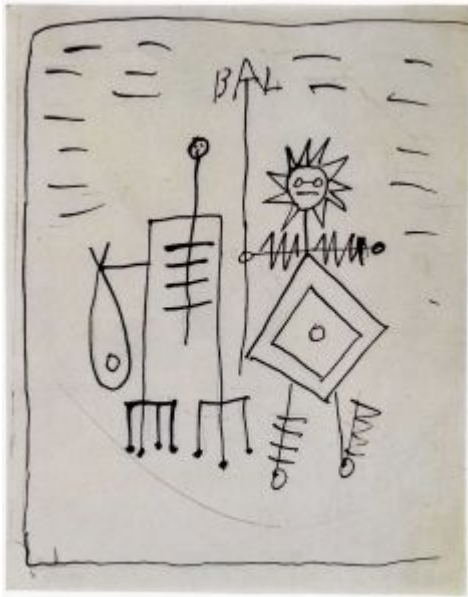
Mère et enfant: Olga et Paulo: la soupe (Maternité). Paris. [Summer/1922~] [Early]/1923 [1924]. Etching, edition 50. 49,5 x 49,5 cm. Sprengel Museum, Hannover. Stiftung Sammlung Bernhard Sprengel; Museum Kunstpalast, Düsseldorf. (Inv K1956.110).

OPP.23:178; B.I:70; Ba:111; HK.65:94p;
PA.17b*:106; UW.88*:89; VO.16*:48p;
WS.95a*:64

Buste de femme. Paris. [Early]/1923. Oil with fixed black chalk on canvas. 99,7 x 81,3 cm. The Norton Simon Museum, Pasadena, CA.

OPP.23:179





BAL: projet de rideau pour le bal de carnaval de Comte Etienne de Beaumont. Paris. Early/1923. India ink on traces of pencil. 22,4 x 17,5 cm. Musée Picasso, Paris. Dation 1979.

OPP.23:195; MPP:1553; PP.23:015; BA.03a*:123; RK.01*:n/a; TO.96b*:162

Femme et enfant. Paris. [Early]/1923. India ink & sanguine on paper. 24 x 31,2 cm. Musée Picasso, Paris. Dation 1979.

OPP.23:198; MPP:971; PP.23:024; CK.04*:29; TL.95*:10; UW.88:49a





Main. Paris. [Early]/1923. Charcoal & chalk on grey paper. 22,9 x 20,2 cm. Albright-Knox Art Gallery, Buffalo, NY. (Inv 1962:5.6). Bequest of Norman E. Boasberg, 1962.

OPP.23:213

Pomme et verre. Paris. [Early]/1923. Oil & sand on canvas. 24,7 x 33,3 cm. Christie's. #49, 2782, 05/08/13. Formerly Fuji Television Co., Ltd., Tokyo.

OPP.23:262; PP.23:056; Z.V:67





Arlequin au miroir. Paris. Early/1923. Infrared of oil on canvas [Underlayer of *Arlequin au miroir*]. [100,3 x 81,3] 100 x 81 cm. Museo Thyssen-Bornemisza, Madrid. (Inv 709:1979.87). Formerly Thyssen-Bornemisza Foundation, Lugano-Castagnola.

OPP.23:290

Tête de garçon. Paris. [Early]/1923. India ink. 14,5 x 13,5 cm. Private collection.

OPP.23:349; PP.23:026; Z.V:94





Couple. Paris [Cap d'Antibes]. [Summer] 1st-Quarter/1923.
Charcoal on hand-made paper. 27,5 x 22 cm. Museo Picasso,
Málaga. On temporary loan from Fundación Almine & Bernard
Ruiz-Picasso para el Arte.

OPP.23:452; NC.17*:66

Femme et enfant. Paris. [1922~]
[Early]/1923. Sanguine on paper. [24,2 x
31,5] 24,1 x 31,7 cm. Christie's. #237,
8050, 02/08/12. Formerly Sotheby's. #17,
N08089, 05/03/05.

OPP.23:175; PP.23:021; Z.IV:452;
UW.88:61a





Enfant au cheval de bois (Paulo). Paris. 1st-Quarter/1923. Charcoal, pastel & gouache on paper. 103,5 x 73,5 cm. Museo Picasso, Málaga. On temporary loan from Fundación Almine & Bernard Ruiz-Picasso para el Arte.

OPP.23:032; P.III:1309; PP.23:014; Z.V:52; DP.20*:54; GP.32*:126; GS.03:2.31; JR.07:219p; KZ.32*:121; LO.18*:n/a; NC.17*:65; PA.24a*:n/a; WS.95a*:71

Tête de Paulo. Paris. 1st-Quarter/1923. Oil & sepia on canvas. 24 x 19 cm. The Picasso Estate.

OPP.23:055; P.III:1311; KZ.32*:135





Femme. Paris. 1st-Quarter/1923. Italian ink on paper. 27 x 21 cm. The Picasso Estate.

OPP.23:057; P.III:1314

Tête d'enfant. Paris. 1st-Quarter/1923. Charcoal on paper. 62 x 48,5 cm. Marina Picasso Collection. Courtesy Galerie Jan Krugier, Geneva.

OPP.23:058; P.III:1315





Joueur de flûte de Pan. Paris. 1st-Quarter/1923. India ink on paper. 24 x 32 cm. Private collection. Courtesy Galerie Schmit, Paris.

OPP.23:059; P.III:1316; PP.23:150; Z.V:107; UW.88*:57

Jeune homme au miroir, nu joueur de flûte de Pan, Amour. Paris. 1st-Quarter/1923. India ink on paper. 24,5 x 32 [24,7 x 32,3] cm. Sotheby's. #230, NY7546, 11/10/00.

OPP.23:060; P.III:1317; PP.23:175; Z.V:119; GD.11:25p; LO.90c:272p





Jeune homme au miroir, nu joueur de flûte de Pan, Amour. Paris. 1st-Quarter/1923. India ink on paper. 24,5 x 32 cm. Private collection.

OPP.23:062; P.III:1319; PP.23:163; Z.V:121;
EM.55:137p; LO.90c:272p

Jeune homme au miroir et études de nus féminins. Paris. 1st-Quarter/1923. India ink on paper. 24 x 31 cm. Private collection.

OPP.23:063; P.III:1320; PP.23:161;
Z.V:116; AB.39a*:172; UW.88:60a





Jeune homme au miroir, nu, joueur de flûte de Pan, Amour. Paris. [1922] 1st-Quarter/1923. Pastel & India ink on paper [OIC]. 22,5 x 20 cm. Private collection, Berlin.

OPP.23:064; P.III:1321; PP.23:165; Z.V:122;
NM.08:92p; WR.96:105p

La flûte de Pan (Étude). Paris. [Summer] 1st-Quarter/1923. India ink on paper. 24,5 x 32 cm. Private collection.

OPP.23:065; P.III:1323; PP.23:167a;
Z.V:130; JL.71:136p; JR.07:224p;
WR.96:105p; WW.91:298p





Saltimbanque assis avec sa canne (Le soupir). Paris. 1st-Quarter/1923. Oil & charcoal on canvas. 61 x 50 cm. The Museum of Modern Art, NYC. (Inv 1243.1979). James Thrall Soby Bequest, 1979.

OPP.23:067; P.III:1325; PP.23:031; Z.V:12; AB.39a*:174; AB.46:128p; BS.55:185p; CH.30a*:9; DC.87:315; DO.07*:176; HT.34*:47; JR.07:222p; JR.62*:4.36; NY.29j*:17; NY.30a*:12; PH.96:5; UW.88*:54; WR.72*:118p

Couple. Paris [Cap d'Antibes]. [Summer] 1st-Quarter/1923. Pencil on paper. 27 x 21 cm. The Picasso Estate.

OPP.23:068; P.III:1328





Couple. Paris [Cap d'Antibes]. [Summer] 1st-Quarter/1923. Pencil on paper. 27 x 21 cm. The Picasso Estate.

OPP.23:069; P.III:1329

Saltimbanque assis. Paris. [1st-Quarter]/1923. Pencil & brown chalk. 31,5 x 24 cm. Wadsworth Atheneum Museum of Art, Hartford, CT. The Elia Gallup Sumner & Mary Catlin Sumner Collection.

OPP.23:161; PP.22:258; DC.87:297; UW.88*:66





Saltimbanque assis. Paris. 1st-Quarter/1923. Pencil, brown chalk & watercolor on paper. 32 x 24,1 cm. Private collection, Rottenburg.

OPP.23:185; BH.06*:146p; RD.08*:59p; RD.11*:25

Saltimbanque assis. Paris. [Winter/1922~1923] 1st-Quarter/1923. Sanguine on paper [OiC]. 32 x 24,5 cm. Private collection.

OPP.23:187; P.III:1304; PP.22:257; Z.V:9; UW.88:66a





Jeune homme au miroir, nu, joueur de flûte de Pan, et enfant. Paris. 1st-Quarter/1923. Pastel on blue-gray paper. 22,5 x 20 cm. Kravis Collection. Formerly Hans Simon Collection, Berlin; Mrs. Walter W. Weismann, NY.

OPP.23:190; P.III:1322; PP.23:167; Z.V:123; JR.62*:4.38; NY.21g*:38

Saltimbanque assis. Paris. [1st-Quarter]/1923. Lithograph with blue & yellow pastel. 33,3 x 25,9 cm. Christie's. #0273, 7472, 11/29/07.

OPP.23:197





Portrait d'adolescent en pierrot. Paris. 1st-Quarter/1922. Pastel on paper. 22 x 20 cm. The Picasso Estate.

OPP.23:200; P.III:1283

Jeune homme au miroir, nu, joueur de flûte de pan, enfant. Cap d'Antibes. [First-Quarter]/1923. Pen & ink on paper. 24,6 x 31,9 cm. Sotheby's. #128, L10007, 06/23/10.

OPP.23:224; PP.23:164; Z.V:120; BS.96*:271; FS.82:98p; NY.52c*:41; RO.17:90p; UW.88:113p





Portrait d'Olga. Paris. [Autumn] 1st-Quarter/1923. Sepia on paper. 43 x 35,5 cm. Private collection, Germany.

OPP.23:156; MD.02*:144p; RD.00*:97

Paul Picasso à dos d'âne, au jardin du Luxembourg. Paris. Pre-15-April/1923. Contretype. S/U. Musée Picasso, Paris. (Inv FPPH42).

OPP.23:414





Portrait de Paulo. Paris. February/1923. Oil on canvas. 130 x 97 cm. The Picasso Estate.

OPP.23:054; P.III:1310; PP.23:040; Z.VI:1431; BS.55:111; HK.65:105p; MI.53*:46

Feuille d'études: Cupidon et danse au son de la flûte de Pan. Paris. 4-February/1923. Pen & ink on paper. 13,2 x 20,8 cm. Musée Picasso, Paris. Dation 1979.

OPP.23:056; MPP:983; P.III:1313; PP.23:025; TL.95:22p; UW.88:56c





Couple. Paris. 6-February/1923. Charcoal on paper. 27 x 21,4 cm. Museo Picasso, Málaga. Acquisition 2010.

OPP.23:453; MPM:3.20; NC.17*:67

Tête de jeune homme. Paris. 11~12-February/1923. Conté crayon on paper. 63,5 x 47,5 cm. Sotheby's. #10, L14002, 02/05/14. Formerly Jan and Marie-Anne Krugier-Poniatowski Collection; Marina Picasso Collection. (Inv 03289).

OPP.23:061; P.III:1318; PP.23:029; Z.V:13;
BR.99*:130; GD.77:38p; HB.96*:64; JC.98*:174;
JR.07:223p; KB.01*:79; MA.00d*:178; MA.95c*:6;
MB.84*:83; MP.81*:134; MP.83*:109; MU.07a*:179;
PA.02e*:157; TL.95*:6; VE.81*:150; VE.99*:145;
VI.05*:143





Tête classique. Paris. 12-February/1923. Black Conté crayon, charcoal & estompe on rose tinted paper. 63 x 47,8 cm. Christie's. #10, 22010, 11/08/22. Formerly The Paul G. Allen Collection.

OPP.23:442; LO.37b*:31

La flûte de Pan: couple avec amour et joueur de flûte de Pan (Étude). Cap d'Antibes. [Summer] 25-February/1923. Ink on paper. 24 x 31,4 cm. Peter Nathan Collection, Zürich. Formerly Rosengart Collection, Luzern.

OPP.23:026; PP.23:171; AN.18:50p; BS.55:110; EC.02:396; JC.98*:237; KB.01*:84; MR.13:32p; RD.00*:95; TL.95*:11; UW.88*:56





Femme nue couchée sur le dos et jeune homme à la flûte de Pan. Paris. 26-February/1923. India ink on paper. 24 x 31,5 [31] cm. Sotheby's. #139, N08790, 11/03/11. Formerly Christie's. #0170, 7407, 06/19/07; Christie's. #19, 1429, 11/03/04; Mr. & Mrs. Daniel Saidenberg Collection, NY.

OPP.23:173; PP.23:157; Z.V:117; BS.55:86; JR.62*:8.24

Pan et nu endormi. Paris. 26-February/1923. Pen & India ink on paper. 24,2 x 31,3 cm. Sotheby's. #276, L11005, 02/09/11. Formerly Portakal Art and Culture House. 2010; Christie's. #33, 5535, 12/02/08.

OPP.23:208; IB.10*:n/a





La cage d'oiseaux. Paris. Spring/1923. Oil & charcoal on canvas. 200 x 140 cm. Private collection, TX. Formerly Sally and Victor W. Ganz Collection, NY.

OPP.23:013; FM:970; P.III:1331; PP.23:051; Z.V:84; EC.02:320; GC.96:188p; GP.32*:121; GP.96:150p; JR.62*:3.38; KS.62:27; KZ.32*:113; LP.99:108p; MF.97:38p; MJ.55*:60; MM.67:33; NY.471*:3; NY.53m*:11; PD.09:230p; SF.48b*:9; TC.13:3.9; TO.77:61; UP.00:532; WR.80*:246p; WR.96:41p; WW.91:285p

Pomme épluchée, verre et couteau. Paris. Spring/1923. Oil on canvas. 22 x 27 cm. Private collection.

OPP.23:022; PP.23:058; Z.V:79





Portrait d'Olga Picasso. Paris. [1918] [Spring]/1923. Oil on canvas. 130 x 97 cm. Private collection, London. Formerly Christie's. #25, 9636, 05/09/01.

OPP.23:033; P.III:1428; PP.23:078; Z.V:53; AC.46:201; CG.93:175; CH.31c*:58; CR.93:14p; EC.02:373; EC.16*:109; FP.73:259p; JC.40:99p; JR.07:241p; MM.07*:69; PA.24a*:n/a; PA.28a*:142; PI.30*:247; RR.09*:23; TK.83b*:n/a; WR.80*:243; WR.96:296p; WS.02*:67

Pomme et verre devant une fenêtre.
Paris. Spring/1923. Oil [& glass paper] on canvas. 22 x 27 cm. Private collection.

OPP.23:070; P.III:1343; PP.23:054; Z.V:65; NY.57e*:32





Tête de jeune homme. Paris. Spring/1923. Ink & watercolor on paper. [36 x 24] 36,5 x 24,8 cm. Milton and Lois Shiffman Collection. Courtesy Donald Morris Gallery.

OPP.23:071; P.III:1342; PP.23:028; Z.V:97; MM.88:23; NY.37b*:4

Nu féminin étendu sur un divan. Paris. Spring/1923. India ink on paper. 24 x 31 cm. Private collection.

OPP.23:076; P.III:1347b; PP.23:137; Z.V:132; BS.55:314p





Verre. Paris. Spring/1923. Oil, [sand] & glass paper on canvas. 38 x 46 cm. The Picasso Estate.

OPP.23:080; P.III:1351; PP.23:071; Z.V:82; MI.01*:63

Femme assise. Paris. Spring/1923. India ink on paper. 13,5 x 11 cm. The Picasso Estate.

OPP.23:081; P.III:1352





Femme drapée assise. Paris. Spring/1923 [~Early/1924]. India ink on cardboard. 14 x 10,5 cm. Private collection.

OPP.23:082; P.III:1353; PP.24:051; Z.V:261; WR.96:46p

Verre et fruit. Paris. Spring/1923. Oil & sand on canvas. 22,2 x 27,3 cm. Private collection. Courtesy Galería Guillermo de Osma, Madrid.

OPP.23:139; PP.23:065; Z.V:90;
FC.00*:45; MA.00a*:21; NB.96:28



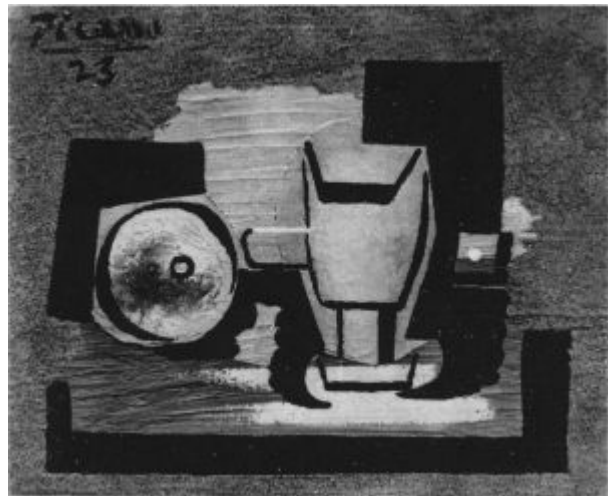


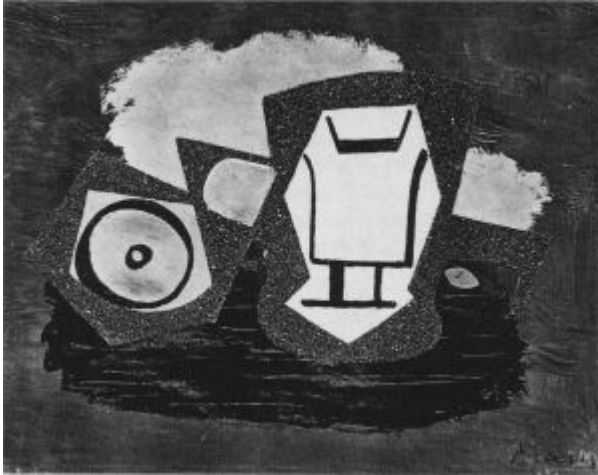
Pomme, verre et couteau. [Paris].
[Spring]/1923. Oil & sand on canvas. 20,5 x 25,2
cm. Sotheby's. #182, L04008, 06/22/04.

OPP.23:172; PP.23:059; Z.V:75; NB.96:26;
SW.56*:51

Pomme et verre sur fond verte. Paris.
Spring/1923. Oil & sand on canvas [Oic].
22 x 27 cm. Private collection.

OPP.23:182; P.III:1338; PP.23:055;
Z.V:66





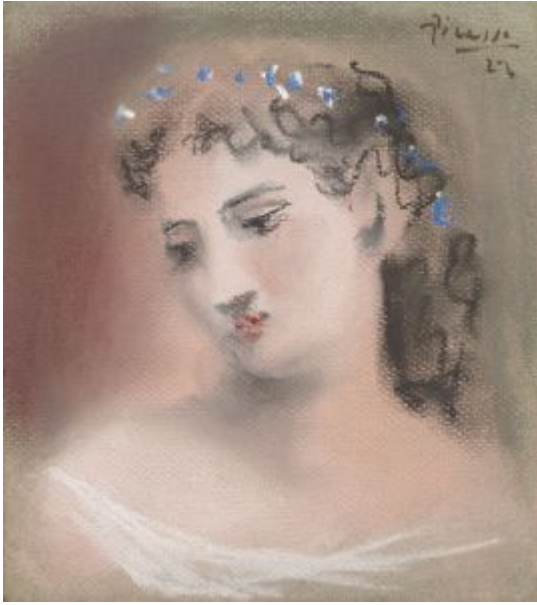
Pomme et verre. Paris. Spring/1923. Oil & glass paper [sand] on canvas [OiC]. 22 x 27 cm. Perls Galleries, New York. Formerly The Chrysler Museum, Norfolk, VA. Walter P. Chrysler, Jr. Collection, NY.

OPP.23:189; P.III:1339; PP.23:057; Z.V:68; CH.34a*:n/a; CH.37a*:24; SF.34*:218

Tête de femme. Paris. [Early] Spring/1923. Oil on canvas [OiC]. 61 x 50 cm. Private collection.

OPP.23:191; P.III:1332; PP.23:005; Z.V:44; NY.23a*:n/a



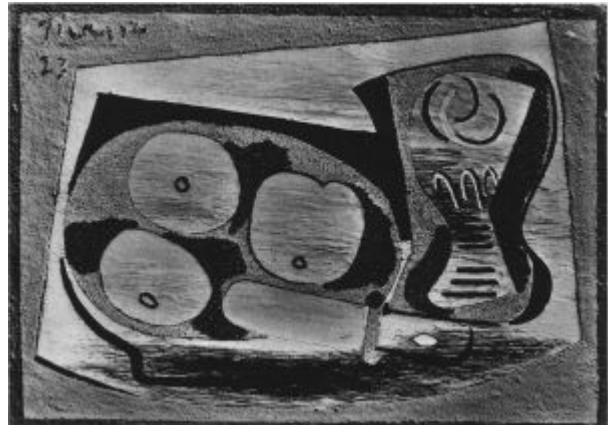


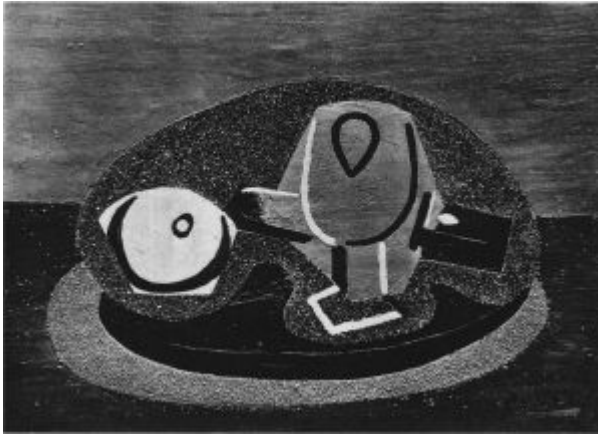
Tête de femme penchée. [Cap d'Antibes] Paris.
[Summer] Spring/1923. Pastel on paper. [22,5 x 20]
22,3 x 19,8 cm. Christie's. #121, 18341, 02/06/20.

OPP.23:192; P.III:1333; PP.23:172; Z.V:126

Nature morte aux pommes. Paris.
Spring/1923. Oil & glass paper [sand] on
canvas [OiC]. [34 x 25] 24,1 x 33 cm.
Private collection.

OPP.23:193; P.III:1336; PP.23:053;
Z.V:64; KZ.32*:131





Pomme verte et verre. Paris, Spring/1923. Oil & glass paper [sand] on canvas [OIC]. [24] 34 x 33 cm. Private collection.

OPP.23:194; P.III:1337; PP.23:052; Z.V:63

Tête de femme de profil. Paris. [Spring]/1923. Oil on canvas. 24 x 19 cm. Sotheby's. #37, N08587, 11/04/09.

OPP.23:210; PP.23:076; Z.VI:1446





Nature morte: guitare et compotier (La mandoline). Paris. [Spring]/1923. Oil on canvas. [81 x 100] 80,6 x 100,2 cm. Philadelphia Museum of Art. (Inv 1952.61.98). A. E. Gallatin Collection, 1952.

OPP.23:214; PP.23:048; Z.V:91; NY.31g*:6; PH.43*:n/a

Nature morte au coquetier. Paris. [Spring]/1923. Oil on canvas. 19 x 24 cm. The Barnes Foundation, Merion, PA. (Inv BF.458).

OPP.23:303





Grappe de raisin et verre. Paris. [Spring]/1923. Oil & sand on canvas [OiC]. 16 x 24 cm. Private collection.

OPP.23:337; PP.23:049; Z.V:60

Masque et gants. Paris. [Spring]/1923. Oil on canvas [OiC]. 24 x 33 cm. Private collection.

OPP.23:338; PP.23:043; Z.V:61





Guitare. Paris. [Spring]/1923. Pastel [OIC]. 21 x 14 cm. Private collection.

OPP.23:339; PP.23:045; Z.V:70; PA.29c*:n/a

Guitare. Paris. [Spring]/1923. Gouache [OIC]. 21 x 14 cm. Private collection.

OPP.23:340; PP.23:046; Z.V:71; PA.29c*:n/a





Verre taillé et paquet de tabac. Paris.
[Spring]/1923. Oil on canvas [OIC]. 27 x 38 cm.
Private collection.

OPP.23:341; PP.23:069; Z.V:73

Poire verte et verre. Paris.
[Spring]/1923. Oil on canvas. [24 x 33]
22,9 x 32,9 cm. Denver Art Museum. (Inv
1966.177). Gift of Charles Francis Hendrie
Memorial.

OPP.23:342; PP.23:066; Z.V:74;
CI.54*:18; DE.66*:n/a; DE.93*:n/a





Verre taillé. Paris. [Spring]/1923. Oil & sand [OiC]. 19 x 24 cm. Private collection.

OPP.23:343; PP.23:064; Z.V:77

Verre sur fond rouge. Paris. [Spring]/1923. Oil & sand. 16 x 24 cm. Private collection.

OPP.23:344; PP.23:070; Z.V:80





La bouteille de rhum. Paris. [Spring]/1923. Oil on canvas [OiC]. 46 x 46 cm. Private collection.

OPP.23:345; FM:968; PP.23:050; Z.V:81

Paquet de cigarettes et verre. Paris. [Spring]/1923. Oil on canvas [OiC]. S/U. Private collection.

OPP.23:346; PP.23:068; Z.V:83





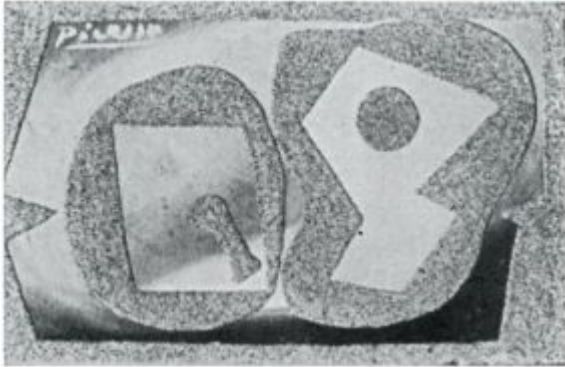
Pomme et verre. Paris. [Spring]/1923. Oil & sand on canvas [OiC]. 19 x 24 cm. Private collection.

OPP.23:347; PP.23:063; Z.V:86

La portée de musique. Paris. [Spring]/1923. Oil & sand on canvas [OiC]. 38 x 46 cm. Private collection.

OPP.23:348; FM:969; PP.23:073; Z.V:88





Pomme et verre. Paris. [Spring]/1923. Oil & sand on canvas [OiC]. 14 x 22 cm. Private collection.

OPP.23:443; PP.23:061

Verre. Paris. [April]/1923. Oil & glass paper on cardboard. 20 x 13,5 cm. Private collection.

OPP.23:074; P.III:1346





Portrait de Paulo, le fils de l'artiste. Paris. 14-April/1923. Oil on canvas. 27 x 22 cm. Museo Picasso, Málaga. On loan from Fundación Almine & Bernard Ruiz-Picasso para el Arte.

OPP.23:011; P.III:1308b; PP.23:042; Z.V:180; DC.87:317; DP.20*:50; EM.55:139p; GC.96:27p; HK.65:106p; JL.13*:16; KS.62:26; KZ.32*:132; MJ.55*:59; PH.96:2; TB.10*:44; WR.96:322p; WS.95a*:74a; WW.91:286p

Paul, fils de l'artiste, à deux ans (Paulo sur un âne). Paris. 15-April/1923. Oil on canvas. 100 x 81 cm. Museo Picasso, Málaga. On temporary loan from Fundación Almine & Bernard Ruiz-Picasso para el Arte.

OPP.23:012; P.III:1308; PP.23:041; Z.VI:1429; AB.97b*:2; AS.60:29; BS.55:388p; HK.65:107p; JF.96:90p; JR.07:241p; JR.14:15p; MG.04c*:7; MG.13*:65p; MI.53*:45; PA.17b*:174; PD.09:212p; UP.00:528; WR.80*:237p; WR.96:323p; WS.94:58p; WS.95a*:74b; WW.91:286p





La lettre (La réponse). Paris. 16-April/1923. Oil on canvas. 100.3 x 81 cm. Christie's. #64A, 17154, 05/13/19. Formerly Cecil Amelia Blaffer (Princess Cecil Amelia von Fürstenberg) Collection.

OPP.23:188; P.III:1306; PP.23:017; Z.V:30;
BE.39*:186/149; BF.44*:51; CH.41c*:121; HO.10*:n/a;
HT.34*:59; JR.62*:4.35; LA.41a*:37; NY.23a*:9;
NY.34b*:10; NY.42a*:84; NY.43l*:18; PA.24a*:20;
PI.34*:188; PL.41*:85; SF.35c*:54; SF.40d*:150;
SF.41b*:150; TO.44*:49

Composition à la planche de bois. Paris. 22-April/1923. Oil, sand & India ink on canvas. 22 x 27 cm. The Picasso Estate.

OPP.23:072; P.III:1344; LE.07*:13





Verre. Paris. 22-April/1923. Oil, [sand] & glass paper on canvas. 16 x 22 cm. The Picasso Estate.

OPP.23:073; P.III:1345; PP.23:072; Z.V:87

Visage de femme. Paris. May/1923. Oil & sand on wood. 17,5 x 15 cm. The Picasso Estate.

OPP.23:075; P.III:1347; MG.04b*:59





L'homme à la pipe. Paris. May/1923. Oil, India ink & pencil on sized canvas. 130 x 97 cm. Fundación Almine & Bernard Ruiz-Picasso para el Arte.

OPP.23:077; P.III:1348; PP.23:032; Z.V:131; CG.12*:22; DO.07*:175; GA.00*:43; JR.14*:109p; MG.03b*:7; MI.01*:57; UP.00:526; YB.08*:14

Verre et pomme. Paris. May/1923. India ink, oil & glass paper on canvas. 19 x 27 cm. The Picasso Estate.

OPP.23:078; P.III:1349; PP.23:062; Z.V:85





Nature morte au 'Journal'. Paris. June/1923. Oil on the lid of a wooden box. 13 x 17,5 cm. The Picasso Estate.

OPP.23:079; P.III:1350; PP.23:067; Z.V:78; CG.04*:13; MG.04b*:61; MI.01*:61

Composition au verre. Paris. [1st-Quarter/1922] Second-Half/1923 [Early/1924]. Oil on wood panel (plywood). 22 x 33,2 cm. Marina Picasso Collection. (Inv 12320). Courtesy Galerie Jan Krugier, Geneva.

OPP.23:273; P.III:1180; PP.24:047; GS.85*:50; KB.99*:10; TO.14*:20





Les trois Grâces. Cap d'Antibes. [Summer]/1923. Pen & ink on paper. 36,2 x 26,6 cm. Sotheby's. #359, N09341, 05/06/15.

OPP.23:278; PA.66a*:57

Trois nus. Cap d'Antibes. [Summer]/1923. Pen, black ink & sanguine [Oic]. 37 x 26,7 cm. Private collection.

OPP.23:286; PP.23:188; Z.VI:1436; UW.88:67c





Les trois baigneuses I. Paris. [1922~] [Summer]/1923. Drypoint on wove paper, edition 102. [17,5] 17,8 x 13 cm. Christie's. #195, 6532, 12/18/01.

OPP.23:294; B.I:60; Ba:106.B; CK.04*:26

Les trois Grâces II. Paris. [1922~] [Summer]/1923. Etching on wove paper, edition 100. 32,3 x 19,8 cm. Grey Art Gallery. New York University Art Collection. Gift of Edward Albee, 1968. Also Christie's. #189, 6683, 10/09/02.

OPP.23:297; B.I:59; Ba:105.B; MD.02*:147p





Trois baigneuses. Paris. [1922~] [Summer]/1923. Pen & ink on paper. [27 x 24,2] 27,1 x 24,7 cm. Sotheby's. #69, PF1606, 06/01/16. Formerly Christie's. #22, 3585, 03/26/14.

OPP.23:298

Les trois baigneuses III. Paris. [1922~] [Summer]/1923. Etching on Arches wove paper, edition 100. 18 x 13 cm. The Museum of Fine Arts, Houston. Gift of Marjorie G. and Ean C. Horning.

OPP.23:299; B.I:62; Ba:108.B; HN.00*:30; LK.87*:17



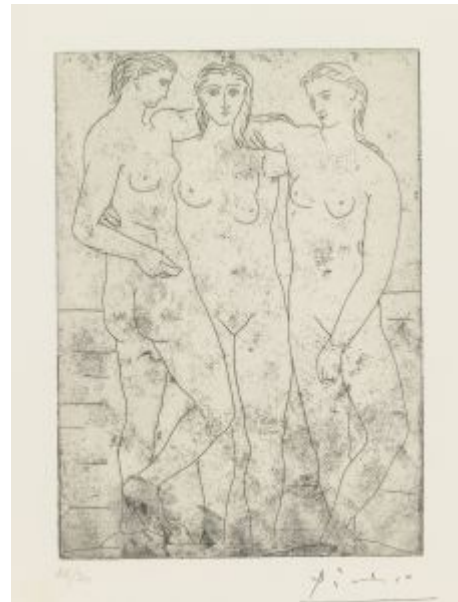


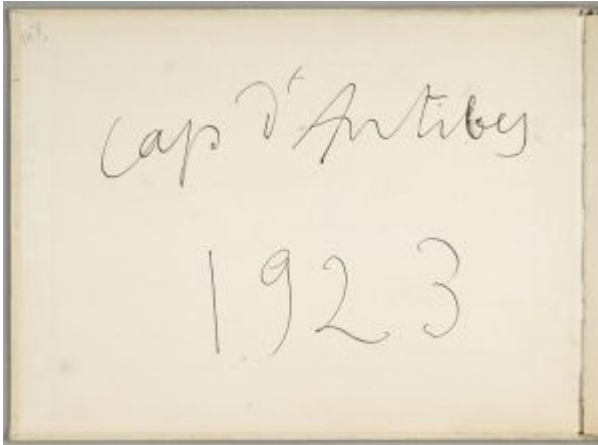
Le collier. Paris. [1922~] [Summer]/1923. Drypoint printed with tone on laid paper. 17,6 x 13 cm. Christie's. #321, 7063, 06/29/05.

OPP.23:300; B.I:58; Ba:103.Bb2

Les trois baigneuses II. Paris. [1922~] [Summer]/1923. Etching on laid paper, edition 50. 17,8 x 12,9 [13] cm. Fundación Pablo Ruiz Picasso, Museo Casa Natal. Also Sotheby's. #150, N09564, 10/27/16.

OPP.23:301; B.I:61; Ba:107.B; P.III:1398; FC.00*:47; MG.00a*:n/a; MG.92*:33





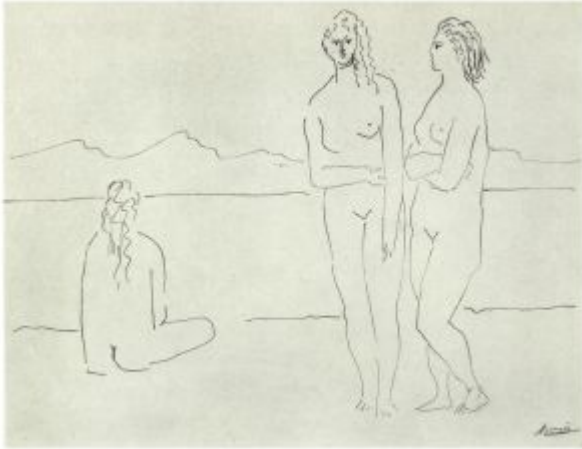
2ème de couverture. Cap d'Antibes.
Summer/1923. Mixed media. 26 x 36 cm. Musée
Picasso, Paris. Sketchbook 041. Jacqueline Roque
Picasso Collection. Dation 1990.

OPP.23:302; MPP:1990.102.c2; AN.18*:28;
BL.96:26.c2

**Femme nue assise accoudée sur le
genou.** Cap d'Antibes. [Summer]/1923.
India ink. 26 x 35 cm. Private collection.

OPP.23:326; PP.23:112; Z.V:20





Trois femmes nues au bord de la mer. Cap d'Antibes. [Summer]/1923. India ink. 22,5 x 28,5 cm. Private collection.

OPP.23:327; PP.23:099; Z.V:24

Femme s'essuyant les pieds. Cap d'Antibes. [Summer]/1923. India ink. 28,5 x 22,5 cm. Private collection.

OPP.23:328; PP.23:124; Z.V:31





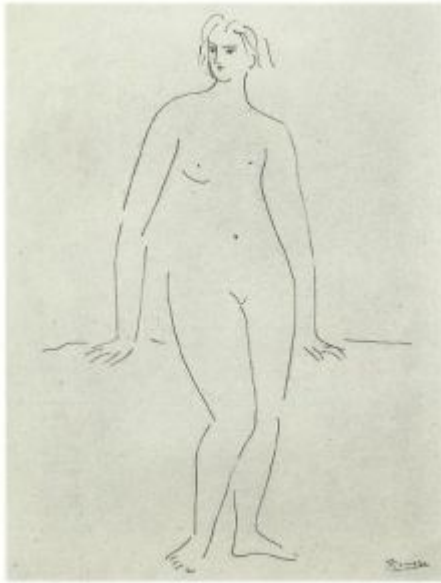
Femme nue debout. Cap d'Antibes. [Summer]/1923. India ink. 35 x 26 cm. Private collection.

OPP.23:329; PP.23:122; Z.V:35

Femme nue debout. Cap d'Antibes. [Summer]/1923. India ink. 35 x 26 cm. Private collection.

OPP.23:330; PP.23:123; Z.V:36



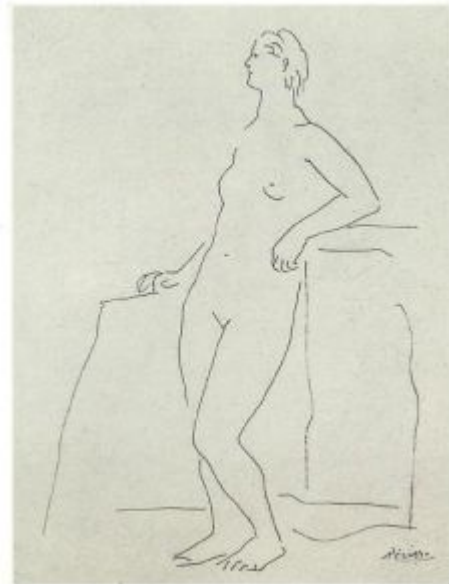


Femme nue debout les main appuyées sur un rocher. Cap d'Antibes. [Summer]/1923. India ink. 35 x 26 cm. Private collection.

OPP.23:331; PP.23:126; Z.V:40

Femme nue debout adossée a un rocher. Cap d'Antibes. [Summer]/1923. India ink. 35 x 26 cm. Private collection.

OPP.23:332; PP.23:127; Z.V:41





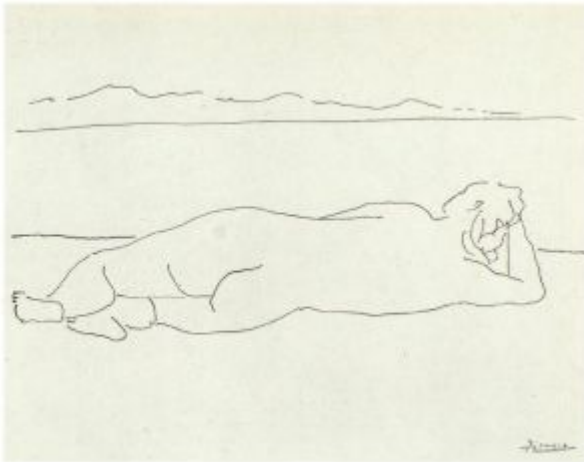
Femme nue assise une main sur le genou. Cap d'Antibes. [Summer]/1923. India ink. 26 x 35 cm. Private collection.

OPP.23:333; PP.23:094; Z.V:43

Deux femmes nues se tenant par la main. Cap d'Antibes. [Summer]/1923. India ink. 29 x 32 cm. Private collection.

OPP.23:334; PP.23:139; Z.V:47



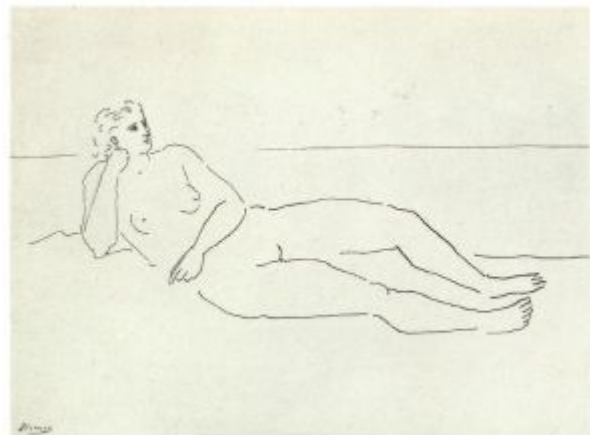


Femme nue couchée au bord de la mer vue de dos. Cap d'Antibes. [Summer]/1923. India ink. 22 x 29 cm. Private collection.

OPP.23:335; PP.23:117; Z.V:49

Femme nue couchée et accoudée. Cap d'Antibes. [Summer]/1923. India ink. 26 x 35 cm. Private collection.

OPP.23:336; PP.23:119; Z.V:54





Trois nus féminins. Cap d'Antibes. [Summer]/1923. Pencil. 42 x 28 cm. Private collection.

OPP.23:350; PP.23:195; Z.V:99

Trois nus féminins. Cap d'Antibes. [Summer]/1923. India ink. 36 x 25 cm. Private collection.

OPP.23:351; PP.23:194; Z.V:101





Femme assise sur un rocher. Cap d'Antibes. [Summer]/1923. India ink. 26 x 35 cm. Private collection.

OPP.23:352; PP.23:081; Z.V:105

Deux nus. Paris. [Summer]/1923. India ink. 21,2 x 20 cm. Museum of Art, Rhode Island School of Design, Providence. (Inv 35.534). Gift of Paul Rosenberg.

OPP.23:353; PP.23:200; Z.V:115;
PV.01*:n/a; PV.46*:n/a; PV.57*:n/a





Jeune homme au miroir, nu, joueur de flûte de Pan, enfant. Cap d'Antibes. [Summer]/1923. Pastel & pencil [OIC]. 22,5 x 20 cm. Private collection. Formerly Baron Napoleón and Eva Gourgaud Collection.

OPP.23:354; PP.23:168; Z.V:124

Tête de femme. Cap d'Antibes. [Summer]/1923. Pastel [OIC]. 22,5 x 20 cm. Private collection. Formerly Baron Napoleón and Eva Gourgaud Collection.

OPP.23:355; PP.23:173; Z.V:127





Jeune homme et femme appuyés sur un fauteuil. Cap d'Antibes. [Summer]/1923. India ink. 32 x 24,5 cm. Private collection.

OPP.23:356; PP.23:176; Z.V:128



Jeune homme et femme appuyés sur un fauteuil. Cap d'Antibes. [Summer]/1923. India ink. 32 x 24,5 cm. Private collection.

OPP.23:357; PP.23:177; Z.V:129



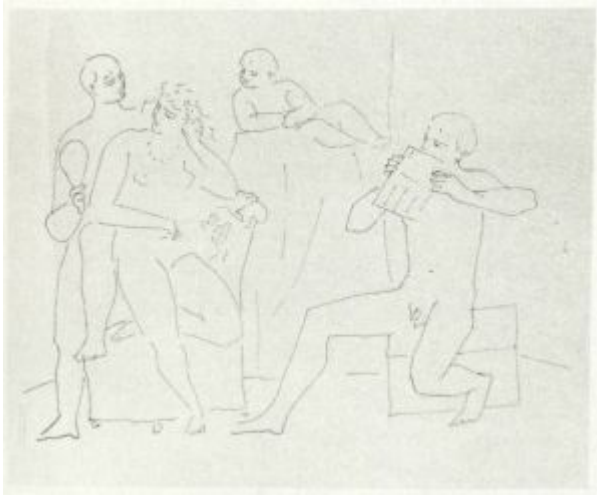
Trois nus féminins. Cap d'Antibes. [Summer]/1923. Pen & ink on paper. 28 x 36,5 cm. Private collection.

OPP.23:372; PP.23:193; Z.VI:1434

Trois nus féminins. Cap d'Antibes. [Summer]/1923. Pen & ink on paper. 26 x 35,2 cm. Private collection.

OPP.23:373; PP.23:103; Z.VI:1439





Jeune homme au miroir, nu, Amour, joueur de Flûte de Pan. Cap d'Antibes. [Summer]/1923. Pen & ink on paper. 25 x 31,5 cm. Private collection.

OPP.23:374; PP.23:166; Z.VI:1441

Deux baigneuses et joueur de flûte de Pan. Cap d'Antibes. [Summer]/1923. Pen & ink on paper. 24 x 31 cm. Private collection.

OPP.23:375; PP.23:160; Z.VI:1442





Mère et enfant. Cap d'Antibes. [Summer]/1923.
Gouache [OïC]. 24 x 31,5 cm. Private collection.

OPP.23:376; Z.VI:1443

Jeune homme au miroir, nu, Amour, joueur de Flûte de Pan. Cap d'Antibes.
Cap d'Antibes. India ink on paper. S/U.
Private collection.

OPP.23:377; PP.23:170; Z.VI:1448





Les trois Grâces (Étude). Cap d'Antibes. Summer/1923. Pen & India ink on paper. 29 x 22 cm. Private collection.

OPP.23:420; AN.18*:34

Le collier. Paris. [Summer]/1923. Drypoint. 17,7 x 13 cm. Musée Picasso, Paris. Dation 1979.

OPP.23:426; Ba:103; MPP:2079





Olga et Paulo: la soupe (Maternité). Dinard. Summer/1922. Etching. 49,7 x 50,1 cm. Musée Picasso, Paris. Dation 1979.

OPP.23:428; Ba:111bis; MPP:2088

Les trois baigneuses I. Paris. [Summer]/1923. Drypoint. 17,7 x 13 cm. Musée Picasso, Paris. Dation 1979.

OPP.23:429; Ba:106; MPP:2082





Les trois Grâces II. Paris. [Summer]/1923. Etching. 32,6 x 19,5 cm. Musée Picasso, Paris. Dation 1979.

OPP.23:430; Ba:105; MPP:2081

Les trois baigneuses III. Paris. [Summer]/1923. Etching. 17,8 x 12,8 cm. Musée Picasso, Paris. Dation 1979.

OPP.23:431; Ba:108; MPP:2084





Les trois baigneuses II. Paris. [Summer]/1923. Etching. 17,8 x 12,9 cm. Musée Picasso, Paris. Dation 1979.

OPP.23:432; Ba:107; MPP:2083

Trois nus féminins (Attribution incertaine).
[Cap d'Antibes]. [Summer]/1923. Pencil on paper.
35 x 26 cm. Private collection.

OPP.23:439





Quatre études de personnages. [Cap d'Antibes]. [Summer]/1923. Pen & ink on paper [Obverse of *Études*]. 24,5 x 32,2 cm. Sotheby's. #10, L22009, 10/13/22. Formerly Marina Picasso Collection.

OPP.23:440

Études. Cap d'Antibes. [Summer]/1923. Pen & ink on paper [Reverse of *Quatre études de personnages*]. 24,5 x 32,2 cm. Sotheby's. #10, L22009, 10/13/22. Formerly Marina Picasso.

OPP.23:441





Les trois Grâces. Paris. [Summer]/1923. Etching. 47,3 x 33 cm. Museo Picasso, Málaga. On temporary loan from Fundación Almine & Bernard Ruiz-Picasso para el Arte.

OPP.23:451; Ba:105.A; NC.17*:64

Tête de femme de profil (I). Paris. Summer/1923~Summer/1924. Etching & scraping on Vélín paper. 11,8 x 7,8 cm. Musée Picasso, Paris. Dation 1979.

OPP.23:319; Ba:74; MPP:2033; BU.22*:108





Trois baigneuses sur la plage. Cap d'Antibes. Summer/1923. Pen & ink on paper. 26 x 35 cm. Sotheby's. #171, N08547, 05/06/09.

OPP.23:209

Femme allongé. Cap d'Antibes. Summer/1923. Brush & black ink on wove paper. 17 x 23,9 cm. Fine Arts Museums of San Francisco. (Inv 1950.67). Gift of Arthur Sachs.

OPP.23:211





Trois nus féminins. Cap d'Antibes. July/1923. Pencil, charcoal, & Sanguine on paper. 35,5 x 26,5 cm. Bonhams. #27, 20092, 11/05/12.

OPP.23:272; PP.23:191; Z.V:98; LO.45c*:150; UW.88:67b

Portrait de Paulo (Paul Picasso pour sa marraine - Juillet 1923). Paris. July/1923. Postcard photograph [Obverse of *Dédicace (Paul Picasso pour sa marraine - Juillet 1923)*]. 13,8 x 8,9 cm. Dr. Stephan Handy Collection. Photographie Sabourin, anciennement Bert, 35, Bd. des Capucines, Paris.

OPP.23:446





Dédicace (Paul Picasso pour sa marraine - Juillet 1923). Paris. July/1923. Ink on postcard photograph [Reverse of *Portrait de Paulo (Paul Picasso pour sa marraine - Juillet 1923)*]. 13,8 x 8,9 cm. Dr. Stephan Handy Collection. Photographie Sabourin, anciennement Bert, 35, Bd. des Capucines, Paris.

OPP.23:447

Tête de jeune homme. Paris [Antibes]. [1st-Quarter] Late-Summer~Early-Fall//1923. Grease crayon on pink Michallet laid paper. 62,1 x 47,4 cm. Brooklyn Museum, NYC. (Inv 39.18). Carl H. DeSilver Fund.

OPP.23:066; P.III:1324; PP.23:027; Z.V:95;
AB.39a*:178; EM.55:131p; GT.81*:67; NY.37b*:4;
PH.16b*:55; RD.00*:96; UW.88*:60; WR.80*:242p;
WS.94:50p





Personnages à l'antique de profil. Cap d'Antibes. [Summer] Post-23-July/1923. Ink on newsprint from Excelsior of 07/23/1923. 33,9 x 35,5 cm. Musée Picasso, Paris. Dation 1979.

OPP.23:219; MPP:984; PP.23:183; AB.00*:96; AB.97b*:186; KS.89:197

Portrait de Doña Maria (La mère de l'artiste). Cap d'Antibes. [Spring] [Early-August]/1923. Oil on canvas. 73 x 60 cm. Musée Réattu, Arles. (Inv 1985.4.1).

OPP.23:023; P.III:1368; PP.23:077; Z.VI:1435; AC.81:23p; BE.09*:62; BS.55:389p; JR.07:235p; MI.53*:44; RI.13*:283p





Gérald et Sara Murphy, Olga Picasso et un homme allongé, sur la plage de la Garoupe, cap d'Antibes. Antibes. August/1923. Gelatin silver print. 8,6 x 12 cm. Musée Picasso, Paris. (Inv APPH6565).

OPP.23:415

Portrait de femme (Sara Murphy). Paris. [End-]Summer/1923. Oil & sand on canvas. [55 x 45] [55,2 x 45,1] 54,6 x 45,7 cm. Private collection.

OPP.23:002; P.III:1401; AN.18*:27; JR.14*:143p; MP.96:55; NM.08:97p; WR.96:55p





Jeune homme au miroir, nu, joueur de flûte de Pan, et enfant. Cap d'Antibes. [End-]Summer/1923. Pastel on on blue-gray paper. 22,5 x 20 cm. Kravis Collection.

OPP.23:025; P.III:1356; PP.23:169; Z.V:125; NY.21g*:39

Nu féminin assis. Cap d'Antibes. [End-]Summer/1923. Black ink on paper. 26 x 35 [35,2] cm. Nationalgalerie, Museum Berggruen, Staatlichen Museen zu Berlin.

OPP.23:027; PP.23:095; Z.VI:1440; BL.06*:122p; BR.96*:43; NY.52c*:39; RK.94*:51





Buste de femme (Sara Murphy). Cap d'Antibes.
[End-]Summer/1923. Oil & sand on canvas. 54,6 x 45,8
cm. Nationalgalerie, Museum Berggruen, Staatlichen
Museen zu Berlin.

OPP.23:030; P.III:1399; P.IV:225; PP.23:002;
BL.06*:125p; GL.84*:10; JR.07:239p; WR.96:54p

**Nu féminin au collier accoudé (Sara
Murphy)**. Cap d'Antibes.
[End-]Summer/1923. India ink on paper.
26 x 35 cm. Private collection.

OPP.23:031; P.III:1359; PP.23:115;
Z.V:42; AV.98:24; PD.93:28





Trois nus féminins. Cap d'Antibes. [End-]Summer/1923. Pen & India Ink on the back of three sheets of writing-paper headed 'Hôtel du Cap d'Antibes. 47,7 x 32,1 cm. Musée Picasso, Paris. Dation 1979.

OPP.23:037; MPP:987; PP.23:185; AN.18*:31; LE.21*:348

Trois nus féminins. Cap d'Antibes. [End-]Summer/1923. Pen & India Ink on writing-paper headed Hôtel du Cap d'Antibes. 27,5 x 21,6 cm. Musée Picasso, Paris. Dation 1979.

OPP.23:039; MPP:985; PP.23:186; CK.04*:27; ND.01*:67; UW.88:64a





La flûte de Pan (Étude). Cap d'Antibes. [End-]Summer/1923. Black chalk on paper. 64 x 49 cm. Museum Ludwig, Köln. (Inv ML/Z 1994/032). Schenkung 1994. Formerly Galerie Rudolf Zwirner, Köln; The Art Institute of Chicago. Bequest of Joseph Winterbotham.

OPP.23:040; PP.23:153; CH.68a*:87; HG.71:123p; JK.69:121p; MG.80:129p; WO.92*:30

Nu couché sur le dos et joueur de flûte de Pan. Cap d'Antibes. [End-Summer]/1923. Pen & India ink on paper. 24,2 x 31,8 cm. Christie's. #26, 4014, 03/26/15. Formerly Christie's. #438, 6691, 02/06/03.

OPP.23:047; PP.23:156; Z.V:113; GD.11:24p





Les trois Grâces. [Cap d'Antibes]. [End-]Summer/1923. Pen & ink on letter-headed paper. [27 x 21,5] 27,2 x 21,4 cm. Sotheby's. #515, L16005, 02/05/16. Formerly Christie's. #420, 6737, 06/26/03; Marina Picasso Collection.

OPP.23:048; FB.13*:n/a; LO.84a*:19; NY.88d*:67; WL.07*:n/a

Deux baigneuses et joueur de flûte de Pan. Cap d'Antibes. [End-]Summer/1923. India ink on paper. [24 x 31] 24,1 x 31,2 cm. Nationalgalerie, Museum Berggruen, Staatlichen Museen zu Berlin. (Inv MB 44/2000).

OPP.23:084; P.III:1355; PP.23:159; Z.V:112; BL.06*:122p; BR.96*:44; BS.55:186p; IC.05:67p; MG.18:56p; RO.17*:170





La flûte de Pan (Étude). Juan-les-Pins [Cap d'Antibes]. [End-]Summer/1923. India ink on paper. 23 x 31 cm. Dr. and Mrs. Marvin Klein Collection.

OPP.23:086; P.III:1357; PP.23:155; Z.V:109; AB.05b:14; AB.39a*:173; JL.71:136p; LK.87*:21; WW.91:298p

La flûte de Pan: joueur de flûte de Pan (Étude).

Cap d'Antibes. [End-]Summer/1923. India ink on paper. 31 x 24 cm. Sotheby's. #5, NY7647, 05/08/01. Formerly Christie's. #10, 6032, 10/23/98.

OPP.23:087; P.III:1358; PP.23:152; Z.V:111; DC.87:55p; FS.82:99p; KZ.32*:325; NY.30g*:16



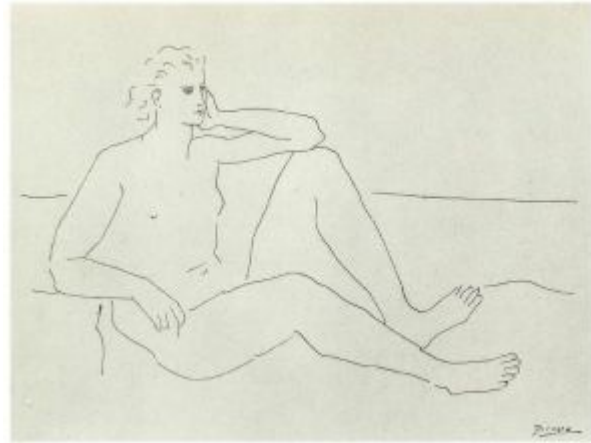


Les trois Grâces. Cap d'Antibes. [1920] [End-]Summer/1923. Ink on paper. 18,5 x 12,5 cm. Private collection, Germany.

OPP.23:088; MD.02*:143p; RD.00*:87; RD.96*:68

Nu féminin le coude sur le genou. Cap d'Antibes. [End-]Summer/1923. India ink on paper. 26 x 35 cm. Private collection.

OPP.23:089; P.III:1360; PP.23:113;
Z.V:39





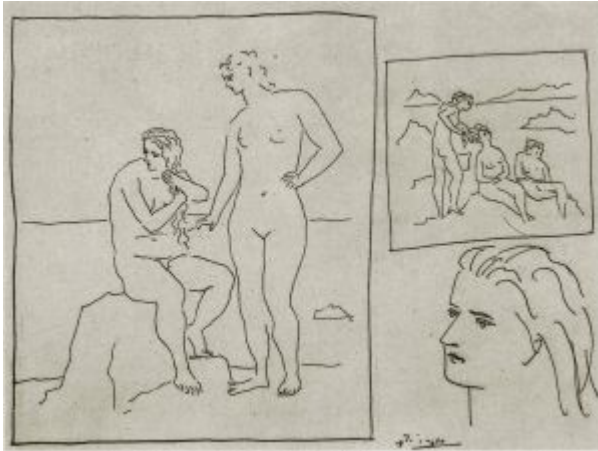
Nu féminin assis la main gauche sur les cheveux. Cap d'Antibes. [End-]Summer/1923. India ink on paper. 26 x 35 cm. Private collection.

OPP.23:090; P.III:1361; PP.23:114; Z.V:34

Baigneuse sur un rocher regardant un crabe. Cap d'Antibes. [End-]Summer/1923. India ink on paper. 26 x 35 cm. Galería Elvira González, Madrid. Formerly Donald Morris Gallery, Inc. Trust.

OPP.23:091; P.III:1362; PP.23:121; Z.V:106; FC.00*:46; KH.96*:n/a; LK.87*:22





Deux groupes de baigneuses et tête. Cap d'Antibes. [End-]Summer/1923. India ink on paper. 26 x 35 cm. Marina Picasso Collection. Courtesy Galerie Jan Krugier, Geneva.

OPP.23:092; P.III:1363; PP.23:098; Z.V:19

Baigneuse au crabe. Cap d'Antibes. [End-]Summer/1923. India ink on paper. 23 x 26 [26 x 35] cm. Private collection.

OPP.23:094; P.III:1365; PP.23:120; Z.V:33





Trois femmes sur un rocher. Cap d'Antibes.
[End-]Summer/1923. Pen & India ink on paper laid
down on paper. 23 x 26 cm. Christie's. #150,
12/01/92.

OPP.23:095; P.III:1366; PP.23:100; Z.V:25

Baigneuse assise. Cap d'Antibes.
[End-]Summer/1923. Pencil on paper. 22,5
x 29 [28,5] cm. Museum Ludwig, Köln. (Inv
ML/Z 1994/030). Schenkung 1994.

OPP.23:096; P.III:1367; PP.23:129;
Z.V:57; IC.05*:36; WO.92*:27





Femme allongé. Cap d'Antibes.
[End-]Summer/1923. India ink on paper. 16,3 x
23,3 cm. Fundación Almine & Bernard Ruiz-Picasso
para el Arte.

OPP.23:097; P.III:1369

Femme assise les mains croisées. Cap
d'Antibes. [End-]Summer/1923. India ink
on paper. 16,5 x 24,5 cm. The Picasso
Estate.

OPP.23:098; P.III:1370





Nu couché et tête. Cap d'Antibes.
[End-]Summer/1923. India ink on paper. 15 x 24,3
[25] cm. Marina Picasso Collection. (Inv 003211).
Courtesy Galerie Jan Krugier, Geneva.

OPP.23:099; P.III:1371; PD.02*:38

Couple. Cap d'Antibes. [End-]Summer/1923. India ink on paper. 58 x 46 cm. J. Seligmann Collection, NY.

OPP.23:100; P.III:1372; PP.20:521; PP.23:215;
Z.V:165; Z.VI:1391





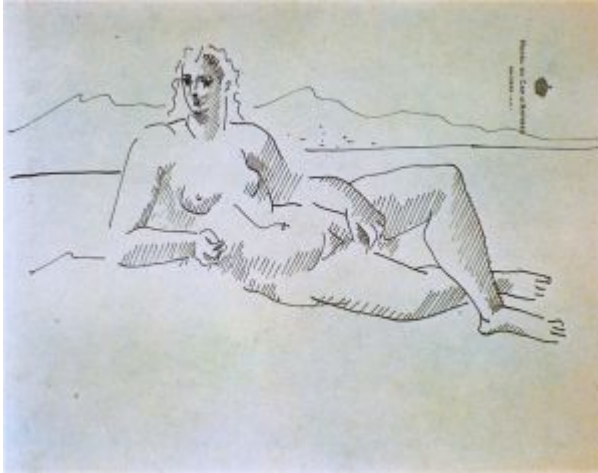
L'entretien. Cap d'Antibes. [End-]Summer/1923. Oil & soft lead pencil on canvas. 150 x 150 cm. Fondation Marie-Anne Poniowski Krugier. (Inv CP.2983). Formerly Marina Picasso Collection. (Inv 12332).

OPP.23:101; P.III:1373; PP.23:201; CG.12*:24; GC.96:184p; HN.00*:62; JC.98*:220; KB.01*:78; MP.81*:137; NM.08:13; PD.02*:36; RR.09*:19; TL.95*:7; TV.06*:16; UW.88*:53; VR.90*:27; VR.90*:27

Portrait de femme de profil. Cap d'Antibes. [End-]Summer/1923. Brush & pen & ink on blotting paper. 8,4 x 8,2 cm. Sotheby's. #107, L14007, 06/24/14. Formerly Marina Picasso Collection. (Inv 03196).

OPP.23:102; P.III:1374; PP.23:105; MP.81*:139; VE.81*:165





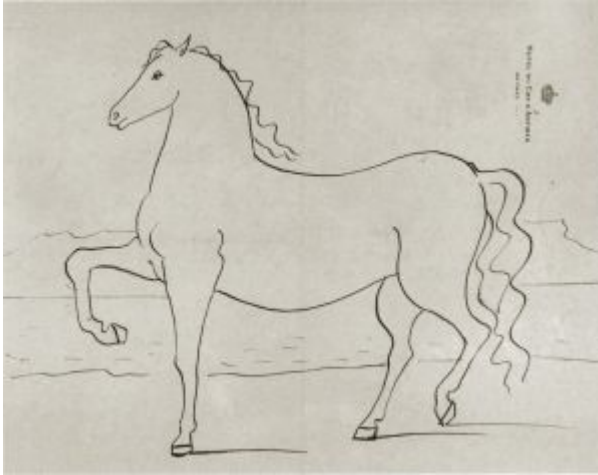
Femme allongé. Cap d'Antibes.
[End-]Summer/1923. India ink on letter paper. 22
x 27 cm. The Picasso Estate.

OPP.23:103; P.III:1375

Femme allongé. Cap d'Antibes.
[End-]Summer/1923. Pen & India ink on
letter paper. [21 x 26,5] 20,9 x 26,6 cm.
Sotheby's. #514, L16005, 02/05/16.
Formerly Marina Picasso Collection.

OPP.23:104; P.III:1376; FB.13*:n/a;
WL.07*:n/a





Cheval. Cap d'Antibes. [End-]Summer/1923. India ink on letter paper. 22 x 27 cm. Private collection.

OPP.23:105; P.III:1377

Nu les mains croisées. Cap d'Antibes. [End-]Summer/1923. India ink on paper. 24 x 16 cm. The Picasso Estate.

OPP.23:106; P.III:1378





Nu debout. Cap d'Antibes. [End-]Summer/1923. Ink on paper. 27 x 21,3 cm. Private collection.

OPP.23:107; P.III:1379; PP.23:199; Z.VI:1430; EM.55:123p; NY.52c*:40; UW.88*:65

Femme debout. Cap d'Antibes. [End-]Summer/1923. India ink on Ingres paper. 26 x 34,7 cm. Musée Picasso, Paris. Sketchbook 041. Jacqueline Roque Picasso Collection. Dation 1990.

OPP.23:108; MPP:1990.102.14r; P.III:1380; PP.23:180; BL.96:26.14r; GG.86*:82; GR.90*:99





Nu assis, les jambes croisées; têtes de femme de trois quarts et de profil; étude raturée de buste de femme aux bras croisés. Cap d'Antibes. [End-]Summer/1923. India ink on Ingres paper. 26 x 34,7 cm. Musée Picasso, Paris. Sketchbook 041. Jacqueline Roque Picasso Collection. Dation 1990.

OPP.23:109; MPP:1990.102.31r; P.III:1381; PP.23:182; BL.96:26.31r; GG.86*:82; GR.90*:99

La mer. Cap d'Antibes. [End-]Summer/1923. Pencil & gouache [tempera] on paper. 20 x 22,5 cm. The Picasso Estate.

OPP.23:110; P.III:1382





Têtes de taureaux. Cap d'Antibes.
[End-]Summer/1923. India ink on newsprint. 11 x
41 cm. The Picasso Estate.

OPP.23:111; P.III:1383; AB.00*:99

Femme allongé. [Cap d'Antibes].
[End-]Summer/1923. India ink on paper.
S/U. The Picasso Estate.

OPP.23:112; P.III:1384





Deux chevaux. [Cap d'Antibes. [End-]Summer/1923. India ink on paper [Obverse of *Picador, taureau et torero*]. 24 x 32 cm. The Picasso Estate.

OPP.23:113; P.III:1385

Picador, taureau et torero. [Cap d'Antibes]. [End-]Summer/1923. India ink on paper [Reverse of *Deux chevaux*]. 24 x 32 cm. The Picasso Estate.

OPP.23:114; P.III:1386





Femme assise. Cap d'Antibes. [End-]Summer/1923. India ink on paper. 13,5 x 10,5 cm. The Picasso Estate.

OPP.23:115; P.III:1387

Les trois Grâces. Cap d'Antibes. [End-]Summer/1923. India ink on paper. 36,1 x 26,6 cm. Private collection. Formerly Marina Picasso Collection.

OPP.23:116; P.III:1389





Les trois Grâces. Cap d'Antibes. [End-]Summer/1923. India ink on paper. 37 x 27 cm. The Picasso Estate.

OPP.23:117; P.III:1390

Les trois Grâces. Cap d'Antibes. [End-]Summer/1923. Pen & India ink on paper. 36 x 26,5 [25] cm. Nationalgalerie, Museum Berggruen, Staatlichen Museen zu Berlin.

OPP.23:118; P.III:1391; PP.23:189; Z.V:103; AB.05b:18; BH.06*:202p; BL.06*:123p; BR.96*:45; WA.27*:n/a





Les trois Grâces. Cap d'Antibes. [End-]Summer/1923. India ink on paper. 37 x 27 cm. The Picasso Estate.

OPP.23:119; P.III:1392

Les trois Grâces. Cap d'Antibes. [End-]Summer/1923. India ink on letter paper. 27 x 22 cm. The Picasso Estate.

OPP.23:120; P.III:1393





Les trois Grâces. [Cap d'Antibes. [End-]Summer/1923. Pencil & pastel on paper. 35,3 x 25 cm. The Hirshhorn Museum and Sculpture Garden, Smithsonian Institution, Washington, DC. (Inv 86.3805). Joseph H. Hirschhorn Bequest, 1981.

OPP.23:121; P.III:1394; PP.23:187; LK.87*:20; UW.88*:67

Trois mains. Cap d'Antibes. [End-]Summer/1923. India ink on paper. 26,5 x 36 cm. The Picasso Estate.

OPP.23:122; P.III:1395





Femme au collier (Portrait de Madame Rubinstein). Cap d'Antibes. [End-]Summer/1923. Brush & ink on paper. [64 x 49] 62,5 x 48 cm. Sotheby's. #309, L20004, 02/05/20. Formerly Marina Picasso Collection. (Inv 003203).

OPP.23:123; P.III:1396; PP.23:214; Z.V:164; PD.02*:32

(Trois baigneuses) Les trois Grâces. Cap d'Antibes. [End-]Summer/1923. India ink on paper. 28 x 22 cm. Private collection.

OPP.23:124; P.III:1397; PP.23:198; Z.V:102; MI.85:4





Études de nus. Cap d'Antibes. [End-]Summer/1923. Pen & India ink on paper. 22,4 x 28,7 cm. Musée Picasso, Paris. Dation 1979.

OPP.23:125; MPP:991; P.III:1400; PP.23:142

Les trois Grâces. Cap d'Antibes. [End-]Summer/1923. Pen & black ink on wove paper. 36,1 x 26,7 cm. The National Gallery of Canada, Ottawa.

OPP.23:134





Baigneuse drapée. Cap d'Antibes. [End-]Summer/1923. Pen & India Ink on paper. [28,7 x 22,2] 28,8 x 22,4 cm. Musée Picasso, Paris. Dation 1979.

OPP.23:136; MPP:989; PP.23:140; AN.18*:32; CK.04*:30; PA.79a*:499

Quatre femmes nues sur la plage. [Cap d'Antibes]. [End-]Summer/1923. Pen. 25,8 x 34,8 cm. Sotheby's. #217, NY7467, 05/11/00. Formerly Fogg Art Museum, Harvard University Art Museums, Cambridge, MA.

OPP.23:151; PP.23:085; Z.VI:1437; CM.67*:n/a; NY.52c*:37; UW.88*:63





Nu féminin allongé. Cap d'Antibes. [End-]Summer/1923. India ink. 26 x 35 cm. Fogg Art Museum, Harvard University, Cambridge, MA. (Inv 1965.316). Bequest of Meta and Paul J. Sachs.

OPP.23:153; PP.23:136; Z.V:46; NY.39i*:11; UW.88*:62

Feuille d'études: homme jouant de la flûte de Pan. Cap d'Antibes. [End-]Summer/1923. Pen & India ink on graph paper. 11,2 x 8,5 cm. Musée Picasso, Paris. Dation 1979.

OPP.23:158; MPP:992.v; PP.23:144; WL.07*:n/a





Baigneuse. [Cap d'Antibes] [Paris].
[End-]Summer/1923. Pencil on paper. 49 x 63,5
cm. Bibliothèque Nationale de France, Paris.
Département des Estampes.

OPP.23:165; JC.98*:221; MP.02*:97;
RO.17*:169

Trois nus féminins (Les trois Grâces). [Cap
d'Antibes]. [End-]Summer/1923. Pen & India Ink on
paper. [29 x 22,5] 28,9 x 22,4 cm. Musée Picasso,
Paris. Dation 1979.

OPP.23:167; MPP:990; PP.23:197; AN.18*:33;
CK.04*:31; RO.17*:175; TY.03*:n/a



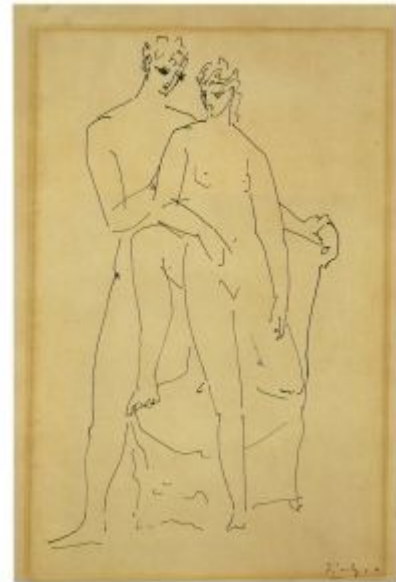


Deux nus féminins. Cap d'Antibes. [End-]Summer/1923. Pen on writing paper headed Hotel du Cap d'Antibes. 28 x [22 cm. Musée National d'Art Moderne, Centre Georges Pompidou, Paris. (Inv AM.1984-666). Donation Louise et Michel Leiris, 1984.

OPP.23:168; PP.23:184; LK.87*:19; MR.13*:11; UW.88*:64

Jeune homme et femme appuyés sur un fauteuil. Cap d'Antibes. [End-]Summer/1923. Pen with India ink on pper. 32,1 x 24,2 cm. Kunstmuseum Basel. Öffentliche Kunstsammlung Basel. Kupferstichkabinett. Donation Dr Gotthelf Kuhn, Riehen.

OPP.23:170; PP.23:179; AH.13*:51; TL.95*:8; UW.88*:59





Femme nue tenant une serviette (Sara Murphy). Cap d'Antibes.
[End-]Summer/1923. Pen & India ink on paper. 108 x 71,5 [72] cm.
Christie's. #6, 7021, 02/07/05.

OPP.23:174; PP.23:133; Z.V:58; LU.64*:238; WW.91:293p

Femme de trois quarts. Cap d'Antibes.
[End-]Summer/1923. Pen & India ink on paper. [35 x 26]
36,5 x 26,5 cm. Sotheby's. #571, L16005, 02/05/16.
Formerly Galerie Thomas, München. 2005; Marina Picasso
Collection (Inv 8740). Sketchbook 67.

OPP.23:176; PP.23:109; GG.86*:81; GS.85*:48;
MP.81*:138.16; NY.88d*:65





Homme et femme. Cap d'Antibes. [End-]Summer/1923.
Charcoal on paper. [63 x 48,5] 64,1 x 49 cm. Christie's. #204,
10335, 02/05/15. Formerly C and M Arts. 2005.

OPP.23:177

Tête de femme. Cap d'Antibes. [End-]Summer/1923.
Pen & India ink on paper. [35 x 26] 36,5 x 26,5 cm.
Robilant & Voena. Formerly Silvan Faessler Fine Art.
2008; Galerie Gmurzynska, Cologne. 2007; Galerie
Thomas. 2005; Marina Picasso Collection (Inv 8737).
Sketchbook 67.

OPP.23:180; PP.23:106; GG.86*:81; GS.85*:48;
MP.81*:138.13; NY.88d*:n/a; TK.86*:n/a ; VE.81*:155-
64





Femme nue debout les bras croisés. Cap d'Antibes.
[End-]Summer/1923. India ink. 35 x 25,5 cm. Christie's. #176,
2889, 11/06/14. Formerly Christie's. #177, 2845, 05/07/14.

OPP.23:181; PP.23:134; Z.V:51; HT.34*:75; OM.42*:n/a;
WW.91:293p

Trois femmes dans l'eau. Cap d'Antibes.
[End-]Summer/1923. Pen & India ink on paper.
13,7 x 11,8 cm. Christie's. #621, 7193,
02/09/06.

OPP.23:183; PP.23:101; Z.V:26; BS.55:23p;
UA.80:28p





Femme nue debout tenant une serviette. Cap d'Antibes. [End-]Summer/1923. [Pencil] pen & ink on paper. [35 x 26] 35,1 x 25,9 cm. Sotheby's. #157, L10005, 02/04/10. Formerly Sotheby's. #218, L06006A, 02/08/06.

OPP.23:184; PP.23:132; Z.V:50; WW.91:293p

Deux nus debout au bord de la mer. Cap d'Antibes. [End-]Summer/1923. Pen & India Ink on paper d'Antibes. 22,2 x 22,4 cm. Musée Picasso, Paris. Dation 1979.

OPP.23:186; MPP:988; PP.23:138; CK.04*:28





Jeune homme au miroir, nu, joueur de flûte de Pan, et enfant. Cap d'Antibes.

[End-]Summer/1923. Pen & ink on paper. 24,8 x 31,8 cm. Private collection. Formerly Sotheby's. #305, N10068, 05/15/19. Richard Gray Gallery, Chicago. 2005; Sotheby's. #440, 6489, 11/04/93.

OPP.23:196; PP.23:174; Z.V:118; AB.05b:13; AR.57*:n/a; EM.55:136p; NY.01f*:n/a; NY.21g*:40; UW.88*:56e

Nu assis la main gauche appuyée sur un rocher. Cap d'Antibes. [End-]Summer/1923. India ink on paper. 35 x 26 cm. Private collection.

OPP.23:199; PP.23:131; Z.V:56



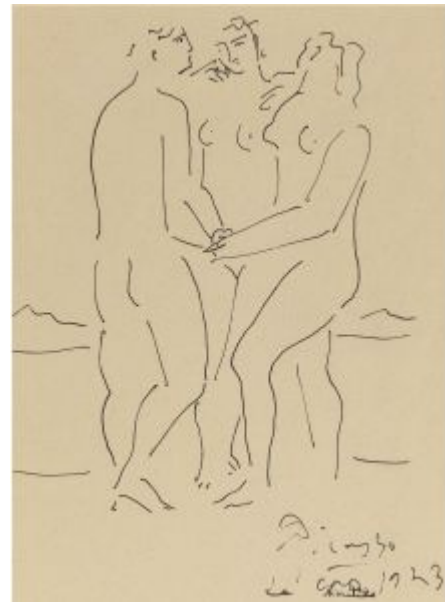


Baigneuse assise s'essuyant le pied. Cap d'Antibes. [End-]Summer/1923. India ink on paper. 35 x 26 cm. Private collection.

OPP.23:201; PP.23:125; Z.V:55

Les trois Grâces. Cap d'Antibes. [End-]Summer/1923. Pen & ink on paper. 25 x 18,5 cm. Fine Art Auctions Miami. #29, 04/27/13. Formerly Sotheby's. #361, N08486, 11/05/08.

OPP.23:203





Femme assise. Cap d'Antibes. [End-]Summer/1923. Pen & India ink on paper. 35 x 26,1 cm. Courtauld Institute of Art, London. (Inv D.1932.SC.145). Gift of Samuel Courtauld, 1932.

OPP.23:212; PP.23:128; Z.V:48

Études: nu féminin et personnages masculins. Cap d'Antibes. [End-]Summer/1923. Red & black fabricated chalks on light tan wove paper. 31,6 x 24,1 cm. Philadelphia Museum of Art. (Inv 1963.181.165). The Louis E. Stern Collection, 1963.

OPP.23:215; PP.23:148; Z.V:160





Feuille d'études: homme, main et pieds. Cap d'Antibes. [End-]Summer/1923. Pen & India ink on graph paper. 11,2 x 8,5 cm. Musée Picasso, Paris. Dation 1979.

OPP.23:217; MPP:992.r; PP.23:145; AN.18*:29; WL.07*:n/a

Nu allongé au bord de la mer. Cap d'Antibes. [End-]Summer/1923. Pen & India ink on letterhead paper from Hotel du Cap d'Antibes. 21 x 26,7 cm. Musée Picasso, Paris. Dation 1979.

OPP.23:218; MPP:986; PP.23:118; AN.18*:30; TL.95:31p





Baigneuse assise se tenant le pied. Cap d'Antibes. [End-]Summer/1923. India ink on white wove paper. [28,5] 29,2 x 22,5 cm. The Metropolitan Museum of Art, NYC. (Inv 1984.433.282). Bequest of Scofield Thayer, 1982.

OPP.23:220; PP.23:130; Z.V:32; GT.10*:71; NY.98*:n/a

Tête de femme. Cap d'Antibes. [End-]Summer/1923. Pen & ink on paper. [36,5 x 26,5] 35,3 x 26 cm. Sotheby's. #126, L10007, 06/23/10. Formerly Marina Picasso Collection. (Inv 8742). Sketchbook 67.

OPP.23:222; PP.23:111; GE.93*:n/a; GG.86*:81; GS.85*:48; MP.81*:138.18; NY.93c*:n/a; TK.86*:D-56; VE.81*:155.18





Baigneuse assise. Cap d'Antibes.

[End-]Summer/1923. Pen & black ink on paper.
[26,5 x 36,5] 26,1 x 35,3 cm. Sotheby's. #113,
L11007, 06/23/11. Formerly Sotheby's. #283,
L10007, 06/23/10; Marina Picasso Collection. (Inv
8733). Sketchbook 67.

OPP.23:223; PP.23:092; GG.86*:81; GS.85*:48;
MP.81*:138.9; VE.81*:155.9

Le joueur de flûte. [Cap d'Antibes].
[End-]Summer/1923. Pen & India ink on
paper. 14,8 x 20,2 cm. Christie's. #61,
5609, 12/02/10.

OPP.23:225





Femme assise. Cap d'Antibes. [End-]Summer/1923. Pen & ink on paper. 28,9 x 22,4 cm. Sotheby's. #222, L22004, 03/03/22. Formerly Pierre Le Guennec Collection, France.

OPP.23:226

Baigneuse assise. Cap d'Antibes. [End-]Summer/1923. India ink. 22,8 x 28,5 cm. Private collection.

OPP.23:228; PP.23:093; Z.V:28;
WO.92:75p





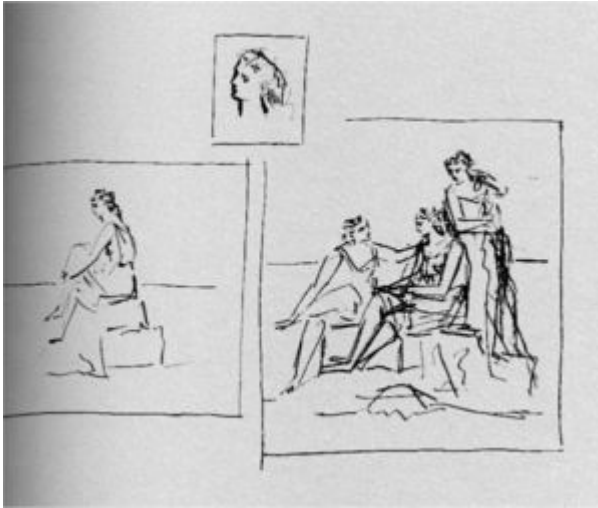
Deux baigneuses. [Cap d'Antibes].
[End-]Summer/1923. Brush & India ink on paper.
26 x 35,5 cm. Waterhouse and Dodd. 2011.
Formerly Christie's. #205, 2438, 05/05/11.

OPP.23:229

Nu féminin assis, une main sur le genou. Cap
d'Antibes. [End-]Summer/1923. Pen & ink on paper. 62,5
x 47,6 cm. Christie's. #164, 1571, 11/02/05.

OPP.23:230



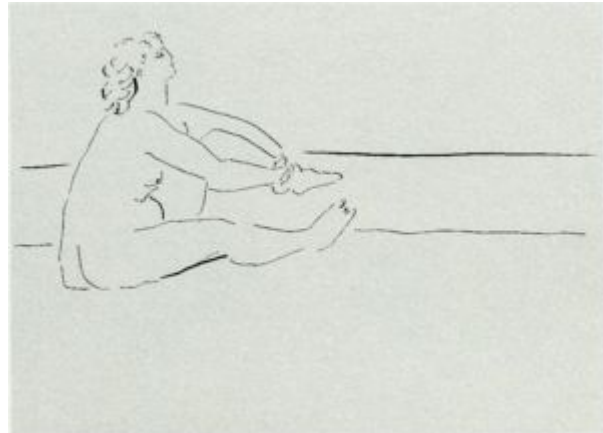


Études de femmes. Cap d'Antibes.
[End-]Summer/1923. Pen & black ink. [26 x 35]
26,5 x 36,5 cm. Marina Picasso Collection. (Inv
8725). Courtesy Galerie Jan Krugier, Geneva.

OPP.23:231; PP.23:080; GS.85*:48

Nu féminin sur une plage. Cap d'Antibes.
[End-]Summer/1923. Pen & black ink. [26
x 35] 26,5 x 36,5 cm. Marina Picasso
Collection. (Inv 8726). Sketchbook 67.
Courtesy Galerie Jan Krugier, Geneva.

OPP.23:232; PP.23:082; GS.85*:48;
MP.81*:138.2





Trois baigneuses. Cap d'Antibes.
[End-]Summer/1923. Pen & black ink. [26 x 35]
26,5 x 36,5 cm. Sotheby's. #104, L20005,
02/19/20. Formerly Marina Picasso Collection. (Inv
8727). Sketchbook 67.

OPP.23:233; PP.23:083; GS.85*:48;
MP.81*:138.3

Baigneuses. Cap d'Antibes.
[End-]Summer/1923. Pen & brush & ink on
paper. [26 x 35] [26,5 x 36,5] 25,7 x 34,6
cm. Sotheby's. #37, L23005, 04/19/23.
Formerly Marina Picasso Collection. (Inv
8728). Sketchbook 67.

OPP.23:234; PP.23:086; GS.85*:48;
MP.81*:138.4





Baigneuse. Cap d'Antibes. [End-]Summer/1923. Pen & black ink on paper. 25,2 x 34,3 cm. Sotheby's. 2022. Formerly Sotheby's. #111, L19007, 06/20/19; Sotheby's. #48, N09727, 05/18/17; Marina Picasso Collection. (Inv 8729). Sketchbook 67.

OPP.23:235; PP.23:088; GS.85*:48; MP.81*:138.5; NY.87c*:8792

Baigneuses. Cap d'Antibes. [End-]Summer/1923. Pen & black ink on paper. [26 x 35] 26,5 x 36,5 cm. Sotheby's. #638, L16005, 02/05/16. Formerly Marina Picasso Collection. (Inv 8730). Sketchbook 67.

OPP.23:236; PP.23:089; GS.85*:48; MP.81*:138.6





Études: groupes de baigneuses. Cap d'Antibes.
[End-]Summer/1923. Pen & black ink on paper.
[26 x 35] 26,5 x 36,5 cm. Sotheby's. 2022.
Formerly Sotheby's#411, N10068, 05/15/19;
Marina Picasso Collection. (Inv 8734). Sketchbook
67.

OPP.23:237; PP.23:096; GS.85*:48;
MP.81*:138.10

**Feuille d'études: baigneuses et nus
féminins.** Cap d'Antibes.

[End-]Summer/1923. Ink on paper. [26 x
35] 26,5 x 36,5 cm. The Abelló Collection.
Formerly Sotheby's. #26, N10944,
04/14/22; Marina Picasso Collection. (Inv
8735). Sketchbook 67.

OPP.23:238; PP.23:102; GS.85*:48;
MP.81*:138.11; PD.02*:37





Tête de femme de profil (Sara Murphy). Cap d'Antibes. [End-]Summer/1923. Pen & black ink on paper. [26 x 35] [26,5 x 36,5] [25,8 x 34,7] 26 x 34,9 cm. Sotheby's. #49, N09727, 05/18/17. Formerly Marina Picasso Collection. (Inv 8736). Sketchbook 67.

OPP.23:239; PP.23:104; GS.85*:48; MP.81*:138.12

Tête de femme (Sara Murphy). Cap d'Antibes. [End-]Summer/1923. Pen & India ink on paper. [35 x 26] 26,5 x 36,5 cm. Marina Picasso Collection. (Inv 8741). Sketchbook 67. Courtesy Galerie Jan Krugier, Geneva.

OPP.23:240; PP.23:110; GS.85*:48; MP.81*:138.17; WR.96:52p





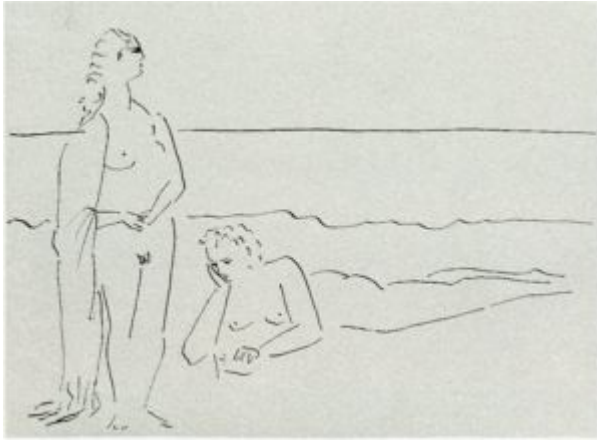
Tête de femme (Sara Murphy). Cap d'Antibes.
[End-]Summer/1923. Pen & black ink. [26 x 35] 26,5 x 36,5 cm.
Marina Picasso Collection. (Inv 8738). Sketchbook 67. Courtesy
Galerie Jan Krugier, Geneva.

OPP.23:241; PP.23:107; GS.85*:48; MP.81*:138.14;
WR.96:52p

Tête de femme de profil (Sara Murphy). Cap
d'Antibes. [End-]Summer/1923. Pen & black ink. [35 x
26] [36,5 x 26,5] 34,8 x 25,8 cm. Sotheby's. #512,
L16005, 02/05/16. Formerly Sotheby's. #13, PF1485,
03/28-04/01/14; Marina Picasso Collection. (Inv 8739).
Sketchbook 67.

OPP.23:242; PP.23:108; GS.85*:48; MP.81*:138.15;
NY.88d*:65



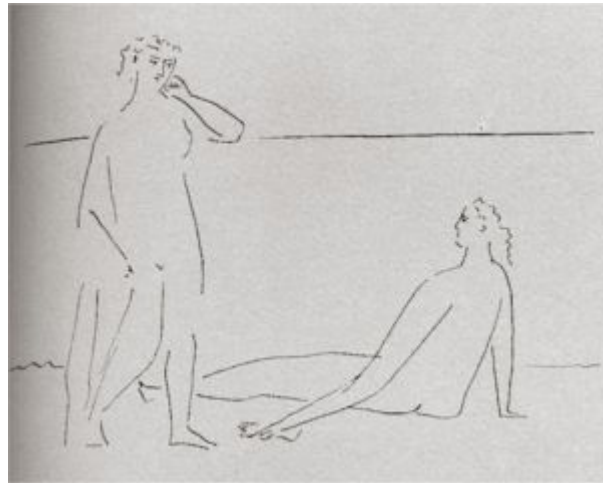


Deux baigneuses. Cap d'Antibes.
[End-]Summer/1923. Pen & black ink. [26 x 35]
26,5 x 36,5 cm. Marina Picasso Collection. (Inv
8732). Sketchbook 67. Courtesy Galerie Jan
Krugier, Geneva.

OPP.23:243; PP.23:091; GS.85*:48;
MP.81*:138.8

Deux baigneuses. Cap d'Antibes.
[End-]Summer/1923. Pen & black ink. [25
x 35] 26,5 x 36,5 cm. Marina Picasso
Collection. (Inv 8731). Sketchbook 67.
Courtesy Galerie Jan Krugier, Geneva.

OPP.23:244; PP.23:090; GS.85*:48;
MP.81*:138.7





Nu féminin debout. Cap d'Antibes. [End-]Summer/1923. Pen & Ink wash. 24 x 18,5 cm. James W. and Marilyn Alsdorf Collection, Chicago.

OPP.23:248; PP.23:141; Z.V:133; CH.68a*:86; JR.62*:8.25



Les trois Grâces. [Cap d'Antibes]. [End-]Summer/1923. Ink, red & black Conté crayon on paper. [36 x 25] [35,6 x 25,4] 36,2 x 26,7 cm. The Santa Barbara Museum of Art. (Inv 1984.20). Bequest of Terey C. Abbott, Jr.

OPP.23:249; PP.23:190; Z.V:104; DK.61*:91; SS.76:290



Jeune homme au miroir, nu, joueur de flûte de Pan, enfant. Cap d'Antibes. [End-]Summer/1923. Pastel & pencil on paper. 22 x 19,6 cm. Sotheby's. #112, L11007, 06/23/11.

OPP.23:250

Trois nus féminins. [Cap d'Antibes]. [End-]Summer/1923. Sanguine [Oic]. 36 x 26 cm. Vicomtesse de Noailles Collection.

OPP.23:252; PP.23:196; Z.V:100; NB.96:14





Deux baigneuses et joueur de flûte de Pan.
[Cap d'Antibes]. [End-]Summer/1923. Pen & India
ink on paper. 24 x 31 cm. Private collection.

OPP.23:254; PP.23:158; Z.V:110

Trois baigneuses. Cap d'Antibes.
[End-]Summer/1923. India ink on paper. 28,8 x 22,3
cm. Private collection. Formerly Sotheby's. #10,
06/28/72.

OPP.23:255; PP.23:143; RD.08*:60p; RD.11*:26





Deux baigneuses. [Cap d'Antibes].
[End-]Summer/1923. Brush & India ink on paper.
26 × 35,6 cm. Private collection.

OPP.23:256

**Joueur de Flûte de Pan et études de
mains et de pieds.** Cap d'Antibes.
[End-]Summer/1923. India ink on paper.
24 x 31 cm. E. W. K. Collection, Bern.

OPP.23:257; PP.23:151; Z.V:108;
JC.98:81p; KB.01*:83





Les trois Grâces. [Cap d'Antibes]. [End-]Summer/1923. Ink on paper. 34,9 x 25,4 cm. Fogg Art Museum, Harvard University, Cambridge, MA. (Inv 1962.31). Bequest of Marian H. Phinney.

OPP.23:258; CM.92*:n/a; LK.87*:18; PL.99*:n/a

Jeune homme au miroir, femme, Amour et joueur de flûte de Pan. Cap d'Antibes. [End-]Summer/1923. Pen & India ink on paper. 23,5 x 31 cm. Private collection, USA.

OPP.23:259; PP.23:162; Z.V:114; TL.95:26p; WS.95a*:78



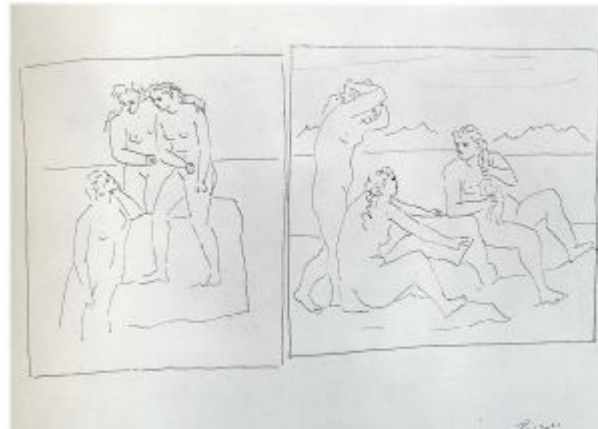


Nus (Deux femmes assises). [Cap d'Antibes].
[End-]Summer/1923. Ink on paper. 55,9 x 39,4 cm. Musée d'Art
Moderne de la Ville de Paris.

OPP.23:260; LK.87*:30

Deux groupes de baigneuses. Cap
d'Antibes. [End-]Summer/1923. India ink
on wove paper. [26 x 35] 25,9 x 35,2 cm.
The Solomon R. Guggenheim Museum,
NYC. Thannhauser Collection.

OPP.23:263; P.III:1364; PP.23:097;
Z.V:18; TC.92:152p





Quatre baigneuses sur la plage. [Cap d'Antibes]. [End-]Summer/1923. Pen & ink on paper. 25,8 x 34,8 cm. Sotheby's. #202, L14004, 02/06/14.

OPP.23:271; PP.23:084; Z.VI:1438

Nu et esquisse de nu. [Cap d'Antibes]. [End-]Summer/1923. India ink on paper. [28,5 x 22,1] 28,8 x 22,5 cm. Sotheby's. #64, N09727, 05/18/17. Formerly Marina Picasso Collection.

OPP.23:274; FB.13*:n/a





Couverture. Cap d'Antibes. [End-]Summer/1923. Mixed media. 27 x 36 cm. Musée Picasso, Paris. Sketchbook 041. Jacqueline Roque Picasso Collection. Dation 1990.

OPP.23:288; MPP:1990.102.c3; BL.96:26.c3; GR.90*:99

Tête de femme de profil. Cap d'Antibes. [End-]Summer/1923. Pen & India ink on paper. 26 x 34,7 cm. Musée Picasso, Paris. Sketchbook 041. Jacqueline Roque Picasso Collection. Dation 1990.

OPP.23:289; MPP:1990.102.17r; PP.23:181; BL.96:26.17r; GR.90*:99; LE.21*:238





Femme au bord de la mer. Cap d'Antibes.
[End-]Summer/1923. Wax crayon on paper. 20 x
30,8 cm. Musée Picasso, Paris. Dation 1979.

OPP.23:304; MPP:3271

Femme couchée. Cap d'Antibes.
[End-]Summer/1923. Wax crayon on paper.
21,6 x 30 cm. Musée Picasso, Paris.

OPP.23:305; MPP:3272





Deux femmes couchées dans les dunes. Cap d'Antibes. [End-]Summer/1923. Lithograph. 22 x 38,3 cm. Musée Picasso, Paris. Dation 1979.

OPP.23:309; B.I:1312; MPP:3266

Nu assis. Page volante. Cap d'Antibes. [End-]Summer/1923. India ink on Ingres paper. 26 x 34,7 cm. Musée Picasso, Paris. Sketchbook 041. Jacqueline Roque Picasso Collection. Dation 1990.

OPP.23:382; MPP:1990.102.10r; BL.96:26.10r





Esquisse de nu; tête de femme encadrée. Cap d'Antibes.
[End-]Summer/1923. India ink on Ingres paper. 26 x 34,7 cm.
Musée Picasso, Paris. Sketchbook 041. Jacqueline Roque Picasso
Collection. Dation 1990.

OPP.23:383; MPP:1990.102.11r; BL.96:26.11r

Nu au miroir; jambe et mains. Cap d'Antibes.
[End-]Summer/1923. India ink on Ingres paper. 26 x
34,7 cm. Musée Picasso, Paris. Sketchbook 041.
Jacqueline Roque Picasso Collection. Dation 1990.

OPP.23:384; MPP:1990.102.12r; BL.96:26.12r





Nu aux bras croisés. Cap d'Antibes. [End-]Summer/1923. India ink on Ingres paper. 26 x 34,7 cm. Musée Picasso, Paris. Sketchbook 041. Jacqueline Roque Picasso Collection. Dation 1990.

OPP.23:385; MPP:1990.102.13r; BL.96:26.13r

Femme en chemise de profil. Page volante. Cap d'Antibes. [End-]Summer/1923. India ink on Ingres paper. 26 x 34,7 cm. Musée Picasso, Paris. Sketchbook 041. Jacqueline Roque Picasso Collection. Dation 1990.

OPP.23:386; MPP:1990.102.15r; BL.96:26.15r





Tête de femme de profil. Cap d'Antibes. [End-]Summer/1923. India ink on Ingres paper. 26 x 34,7 cm. Musée Picasso, Paris. Sketchbook 041. Jacqueline Roque Picasso Collection. Dation 1990.

OPP.23:387; MPP:1990.102.16r; BL.96:26.16r

Esquisse de profil raturée. Cap d'Antibes. [End-]Summer/1923. India ink on Ingres paper. 26 x 34,7 cm. Musée Picasso, Paris. Sketchbook 041. Jacqueline Roque Picasso Collection. Dation 1990.

OPP.23:388; MPP:1990.102.18r; BL.96:26.18r





Tête de femme de profil. Cap d'Antibes. [End-]Summer/1923. India ink on Ingres paper. 26 x 34,7 cm. Musée Picasso, Paris. Sketchbook 041. Jacqueline Roque Picasso Collection. Dation 1990.

OPP.23:389; MPP:1990.102.19r; BL.96:26.19r

1ere de couverture. Cap d'Antibes. [End-]Summer/1923. Mixed media. 27 x 36 cm. Musée Picasso, Paris. Sketchbook 041. Jacqueline Roque Picasso Collection. Dation 1990.

OPP.23:390; MPP:1990.102.c1; BL.96:26.c1



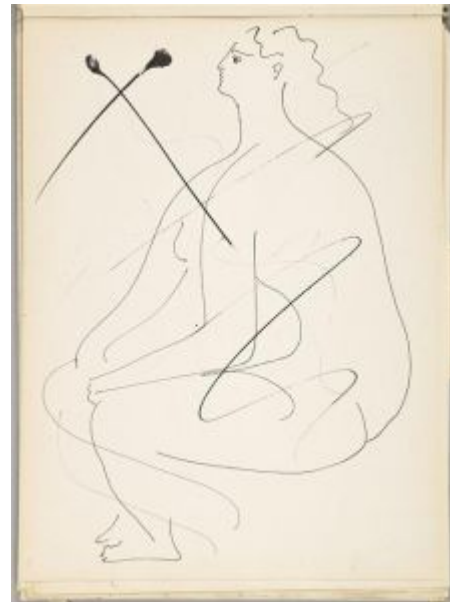


Nu assis. Cap d'Antibes. [End-]Summer/1923. India ink on Ingres paper. 26 x 34,7 cm. Musée Picasso, Paris. Sketchbook 041. Jacqueline Roque Picasso Collection. Dation 1990.

OPP.23:391; MPP:1990.102.01r; AN.18*:28; BL.96:26.01r

Étude de nu assis, raturée. Cap d'Antibes. [End-]Summer/1923. India ink on Ingres paper. 26 x 34,7 cm. Musée Picasso, Paris. Sketchbook 041. Jacqueline Roque Picasso Collection. Dation 1990.

OPP.23:392; MPP:1990.102.20r; BL.96:26.20r





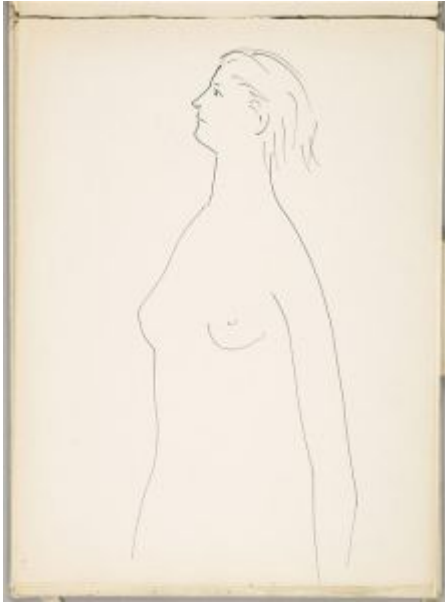
Nu assis de trois quarts. Cap d'Antibes. [End-]Summer/1923. India ink on Ingres paper. 26 x 34,7 cm. Musée Picasso, Paris. Sketchbook 041. Jacqueline Roque Picasso Collection. Dation 1990.

OPP.23:393; MPP:1990.102.21r; BL.96:26.21r

Nu à la draperie. Page volante. Cap d'Antibes. [End-]Summer/1923. India ink on Ingres paper. 26 x 34,7 cm. Musée Picasso, Paris. Sketchbook 041. Jacqueline Roque Picasso Collection. Dation 1990.

OPP.23:394; MPP:1990.102.22r; BL.96:26.22r





Nu de profil. Page volante. Cap d'Antibes.
[End-]Summer/1923. India ink on Ingres paper. 26 x 34,7 cm.
Musée Picasso, Paris. Sketchbook 041. Jacqueline Roque Picasso
Collection. Dation 1990.

OPP.23:395; MPP:1990.102.23r; BL.96:26.23r

Nu aux bras croisés. Page volante. Cap d'Antibes.
[End-]Summer/1923. India ink on Ingres paper. 26 x
34,7 cm. Musée Picasso, Paris. Sketchbook 041.
Jacqueline Roque Picasso Collection. Dation 1990.

OPP.23:396; MPP:1990.102.24r; BL.96:26.24r





Nu assis au visage levé. Page volante. Cap d'Antibes.
[End-]Summer/1923. India ink on Ingres paper. 26 x 34,7 cm.
Musée Picasso, Paris. Sketchbook 041. Jacqueline Roque Picasso
Collection. Dation 1990.

OPP.23:397; MPP:1990.102.25r; BL.96:26.25r



Nu assis de face. Page volante. Cap d'Antibes.
[End-]Summer/1923. India ink on Ingres paper. 26 x
34,7 cm. Musée Picasso, Paris. Sketchbook 041.
Jacqueline Roque Picasso Collection. Dation 1990.

OPP.23:398; MPP:1990.102.26r; BL.96:26.26r



Esquisse raturée. Cap d'Antibes. [End-]Summer/1923. India ink on Ingres paper. 26 x 34,7 cm. Musée Picasso, Paris. Sketchbook 041. Jacqueline Roque Picasso Collection. Dation 1990.

OPP.23:399; MPP:1990.102.27r; BL.96:26.27r

Nu aux bras croisés. Page volante. Cap d'Antibes. [End-]Summer/1923. India ink on Ingres paper. 26 x 34,7 cm. Musée Picasso, Paris. Sketchbook 041. Jacqueline Roque Picasso Collection. Dation 1990.

OPP.23:400; MPP:1990.102.28r; BL.96:26.28r





Nu debout. Cap d'Antibes. [End-]Summer/1923. India ink on Ingres paper. 26 x 34,7 cm. Musée Picasso, Paris. Sketchbook 041. Jacqueline Roque Picasso Collection. Dation 1990.

OPP.23:401; MPP:1990.102.29r; BL.96:26.29r

Nu assis. Cap d'Antibes. [End-]Summer/1923. India ink on Ingres paper. 26 x 34,7 cm. Musée Picasso, Paris. Sketchbook 041. Jacqueline Roque Picasso Collection. Dation 1990.

OPP.23:402; MPP:1990.102.02r; BL.96:26.2r





Nu assis de face. Cap d'Antibes. [End-]Summer/1923. India ink on Ingres paper. 26 x 34,7 cm. Musée Picasso, Paris. Sketchbook 041. Jacqueline Roque Picasso Collection. Dation 1990.

OPP.23:403; MPP:1990.102.30r; BL.96:26.30r

Nu à la jambe pliée. Page volante. Cap d'Antibes. [End-]Summer/1923. India ink on Ingres paper. 26 x 34,7 cm. Musée Picasso, Paris. Sketchbook 041. Jacqueline Roque Picasso Collection. Dation 1990.

OPP.23:404; MPP:1990.102.32r; BL.96:26.32r





Nu debout. Cap d'Antibes. [End-]Summer/1923. India ink on Ingres paper. 26 x 34,7 cm. Musée Picasso, Paris. Sketchbook 041. Jacqueline Roque Picasso Collection. Dation 1990.

OPP.23:405; MPP:1990.102.09r; BL.96:26.9r

Nu allongé. Cap d'Antibes. [End-]Summer/1923. India ink on Ingres paper. 26 x 34,7 cm. Musée Picasso, Paris. Sketchbook 041. Jacqueline Roque Picasso Collection. Dation 1990.

OPP.23:406; MPP:1990.102.03r; BL.96:26.3r





4ème de couverture. Cap d'Antibes.
[End-]Summer/1923. Mixed media. 27 x 36 cm.
Musée Picasso, Paris. Sketchbook 041. Jacqueline
Roque Picasso Collection. Dation 1990.

OPP.23:407; MPP:1990.102.c4; BL.96:26.c4

Tête de femme de profil. Cap d'Antibes.
[End-]Summer/1923. India ink on Ingres paper. 26 x
34,7 cm. Musée Picasso, Paris. Sketchbook 041.
Jacqueline Roque Picasso Collection. Dation 1990.

OPP.23:408; MPP:1990.102.04r





Tête de femme de face. Cap d'Antibes. [End-]Summer/1923. India ink on Ingres paper. 26 x 34,7 cm. Musée Picasso, Paris. Sketchbook 041. Jacqueline Roque Picasso Collection. Dation 1990.

OPP.23:409; MPP:1990.102.05r; BL.96:26.5r

Tête de femme de trois quarts. Cap d'Antibes. [End-]Summer/1923. India ink on Ingres paper. 26 x 34,7 cm. Musée Picasso, Paris. Sketchbook 041. Jacqueline Roque Picasso Collection. Dation 1990.

OPP.23:410; MPP:1990.102.06r; BL.96:26.6r





Étude de nu de dos; croquis raturé. Cap d'Antibes.
[End-]Summer/1923. India ink on Ingres paper. 26 x 34,7 cm.
Musée Picasso, Paris. Sketchbook 041. Jacqueline Roque Picasso
Collection. Dation 1990.

OPP.23:411; MPP:1990.102.07r; BL.96:26.7r

Nu au collier. Cap d'Antibes. [End-]Summer/1923. India
ink on Ingres paper. 26 x 34,7 cm. Musée Picasso, Paris.
Sketchbook 041. Jacqueline Roque Picasso Collection.
Dation 1990.

OPP.23:412; MPP:1990.102.08r; BL.96:26.8r



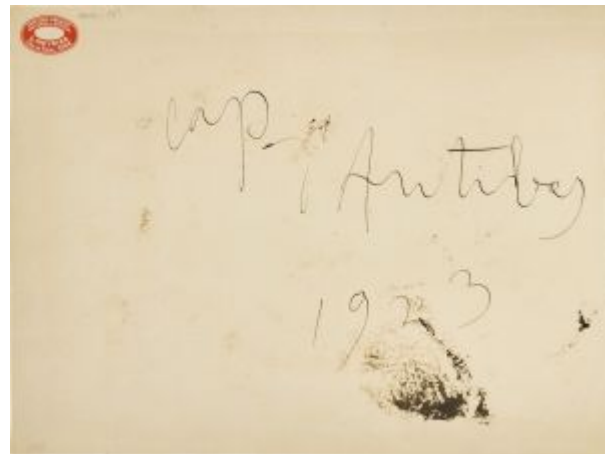


Famille. [Cap d'Antibes]. [End-Summer/1923].
Pen & India ink on paper. 26 x 34,8 cm. Lan Anh
Dinh Collection. Formerly Christie's. #126, 15978,
11/12/18.

OPP.23:413

Page de couverture carnet. Cap
d'Antibes. [End-Summer]/1923. Pen & ink
on card. 26,5 x 36,5 cm. Sotheby's. #27,
N10944, 04/14/22.

OPP.23:425





Jeune homme et femme appuyés sur un fauteuil. Cap d'Antibes. [End-]Summer/1923. Pencil on paper. 32 x 24 cm. Private collection. Formerly Sotheby's. #115, 05/08/91.

OPP.23:444; PP.23:178

Trois nus féminins. Cap d'Antibes. [End-]Summer/1923. Pen & black ink on two sheets of paper. 28 x 13 cm. Private collection. Formerly Christie's. #316, 03/29/88.

OPP.23:445; PP.23:192





Les trois Grâces. Cap d'Antibes. [End-]Summer/1923. India ink on paper. 36 x 27 cm. Museo Picasso, Málaga. On temporary loan from Fundación Almine & Bernard Ruiz-Picasso para el Arte.

OPP.23:450; NC.17*:62

Femme nue debout appuyée. Cap d'Antibes. [End-]Summer/1923. Pen & India ink on paper. [35 x 26] [34 x 25,4] 35 x 26,4 cm. Christie's. #620, 20989, 11/19/22. Formerly Christie's. #164, 6616, 04/09/02; Dr. Anton C. R. Dreesmann Collection.

OPP.23:034; PP.23:135; Z.V:59; WW.91:293p





Femme assise, les bras croisés (Sara Murphy). Paris. Fall/1923. Oil, water-based paint & crayon on canvas. 99,1 x 80 cm. The Metropolitan Museum of Art, NYC. (Inv 53.140.4). Purchase, Rogers Fund, 1951. Acquired from The Museum of Modern Art, NYC. Lillie P. Bliss Collection.

OPP.23:003; P.III:1298; PP.23:003; Z.V:1; AB.30*:73; AB.31*:101; AB.34*:129; AB.39a*:179; AB.39b*:160; AB.46:129p; AD.31*:101; AS.60:28; AS.79*:114; BO.38*:n/a; CB.11:122p; CG.12*:21; CG.93:186; CH.33a*:407; CL.66*:29; DE.45*:n/a; DL.36*:37p; DR.86*:15p; EM.55:130p; GT.10*:72; GW.27*:n/a; HU.68*:n/a; IP.32*:74; JC.59:59p; JC.98*:217; JC.98*:217; KS.89:VI; KY.02*:41; LE.75*:78; ME.44*:42p; MF.06*:47; MG.92*:43; NM.08:21; NY.00a*:45p; NY.03a*:21; NY.10c*:3; NY.27b*:17; NY.34a*:48; NY.35b*:n/a; PA.26c*:n/a; RS.88:61p; SL.35*:n/a; TL.95:34p; TO.38*:57; TT.97*:n/a; WR.80*:242p; WR.96*:57p; WW.94*:5

Nu à mi-corps. Paris. Fall/1923. Oil on canvas. 100 x 80 cm. Musée des Beaux-Arts, Rennes. On loan from Musée National d'Art Moderne, Centre Georges Pompidou, Paris. (02/12/98). (Inv AM.3292P). Donation Maurice Meunier, 1955.

OPP.23:005; PP.23:207; Z.V:156; JM.07*:17; PH.16b*:61





Paulo dessinant. Paris. Fall/1923. Oil on canvas. 130 x 97 cm. Musée Picasso, Paris. Dation 1979.

OPP.23:014; MPP:81; P.III:1312; PP.23:210; Z.V:177;
BS.55:191p; CG.05:118; FS.82:95p; GB.87:112; GC.96:28;
HK.65:109p; JW.01:33p; LB.58:68p; ME.82a:56p; MF.01:34p;
MI.53*:47; MN.80*:n/a; MP.85:77; OW.02:5; OW.03:5;
OW.04:5; OW.13:161p; PA.17b*:173; PA.79a*:127; SD.05*:47;
TI.71:87p; VR.90*:28; WR.02*:n/a; WR.80*:244p; WS.94:59p;
WS.95a*:73; WW.91:286p

La femme au voile bleu. Paris. Fall/1923. Oil on canvas. 100,3 x 81,2 cm. Los Angeles County Museum of Art. (Inv M.46.8.1). Museum Purchase. Mr. & Mrs. Gard de Sylva Funds.

OPP.23:018; P.III:1327; PP.23:206; Z.V:16;
DK.61*:17; GC.96:185p; GP.32*:131; GP.96:144p;
JC.40:120p; JR.62*:4.28; KZ.32*:125; LA.16*:123p;
LA.50c*:12; LO.45b*:13; NY.23a*:10; NY.37i*:12;
NY.39a*:9; PA.24a*:n/a; TB.10*:43; TI.71:26;
UP.00:523; UW.88*:52; WW.91:291p





Tauromachie (Corrida: la mort du toréro).

[Paris]. [Fall]/1923. Pen, ink, & pencil on tracing paper. 21 x 24,5 cm. Sotheby's. #56, N07791, 05/08/02. Formerly Marina Picasso Collection. (Inv 03146).

OPP.23:035; PP.23:240; MP.81*:136;
VE.81*:168

Courses de taureaux (Corrida). Paris. [Fall]/1923. Ink on paper smeared with pencil. 35 x 25 cm. Nationalgalerie, Museum Berggruen, Staatlichen Museen zu Berlin.

OPP.23:041; P.III:1417; PP.23:242; Z.V:146; AB.05b:21;
AB.69:3b; BL.06*:126p; BR.96*:41; DC.87:309;
GG.87:18p; JC.01b*:16; PA.07a*:144p; PA.93a*:41;
RK.94*:52





Corrida: la mort du torero. Paris. [Fall]/1923 [Winter/1822~1924]. Pencil on paper. 47,6 x 62,5 cm. Musée Picasso, Paris. Dation 1979.

OPP.23:042; MPP:996; PP.23:238; Z.V:145; DC.87:306; GG.87:18p; HC.88:5.9; JC.01b*:13; MN.80*:n/a; MP.88:887; PA.07a*:147p; PA.93a*:42; UW.88:55c

Corrida: taureau et cheval. Paris. [Fall]/1923 [Winter/1923~1924]. Pencil on paper. 24,1 x 25 cm. Musée Picasso, Paris. Dation 1979.

OPP.23:044; MPP:998; PP.23:241; Z.V:144; JC.01a*:85; JC.01b*:17; MP.88:886; PA.07a*:146p; PA.79a*:498; PA.93a*:44; PD.06*:n/a





Nu assis dans un fauteuil. [Paris]. [Fall]/1923. Pen & ink on paper. 24,2 x 16,6 cm. Alon Zakaim Fine Art, London. Formerly Sotheby's. #414, N10787, 11/17/21; Christie's. #432, 6737, 06/26/03; Marina Picasso Collection.

OPP.23:049

La toilette. Paris. [Fall]/1923. Lithograph on wove paper, edition 50. 27 x 20,4 cm. Kunstmuseum Bern. Herman und Margit Rupf-Stiftung. Also Christie's. #352, 1344, 02/12/04.

OPP.23:051; B.I:65; FM.70:15; UW.88*:84; WS.95a*:76





Mandoline et portée de musique. Paris. [Spring] Fall/1923. Oil & sand on canvas. [85 x 110] 97 x 130 cm. Dickinson, London/New York. Formerly Christie's. #35, 2782, 05/08/13; Mrs. Patrik C. Hill Collection.

OPP.23:085; P.III:1431; PP.23:047; Z.V:89; AB.30*:72; AB.36a*:226; AB.39a*:182; AB.46:133p; BS.62*:13; DL.67*:37; KZ.60*:171; MM.67:34; NY.55i*:117; NY.94a*:n/a; TH.61*:n/a

Femme et enfant (Maternité). Paris. Fall/1923. Charcoal fixed on canvas. 130 x 97 cm. Museo Picasso, Málaga. On loan from Fundación Almine & Bernard Ruiz-Picasso para el Arte.

OPP.23:126; P.III:1402; GA.00*:42; GS.03:2.5; JR.14*:141p; MA.22a*:114; MA.23c:58p; MG.04c*:8; PA.17b*:171



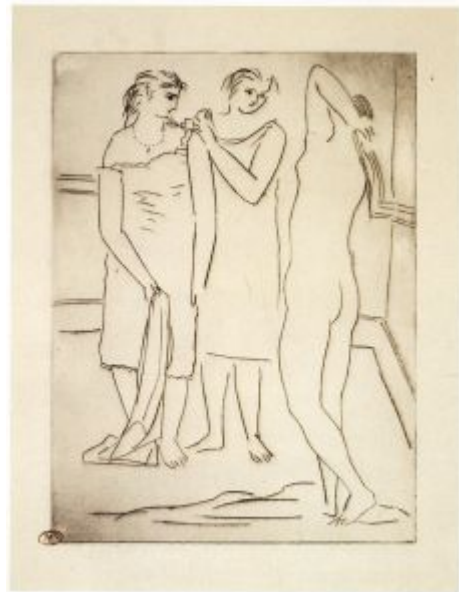


Nu féminin dans un fauteuil. Paris. [1917-1924] [Winter]
Fall/1923. Lead pencil on paper [in sketchbook]. [24 x 16] 23 x 15,5
cm. Musée Picasso, Paris. Sketchbook 203. Jacqueline Roque Picasso
Collection. Dation 1990.

OPP.23:127; MPP:1990.103.20r; P.III:1404; PP.23:011; Z.V:152;
AG.86:63; BL.96:21.20r; GR.90*:100

Deux femmes regardant un modèle nu (I). Paris.
Fall/1923. Drypoint, scraping & etching on zinc. 17,8 x
13 cm. Musée Picasso, Paris. Dation 1979.

OPP.23:128; Ba:102.1; MPP:2067; P.III:1405;
CK.04*:32



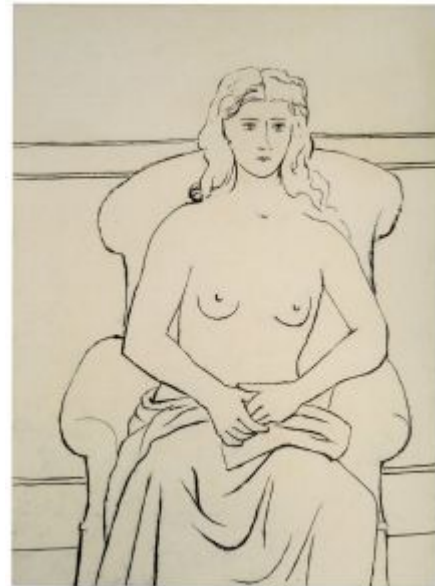


Femme dans un fauteuil et visage féminin (Étude). Paris. Fall/1923 [1917~1924]. Pencil in sketchbook. 24 x 16 cm. Musée Picasso, Paris. Sketchbook 203. Jacqueline Roque Picasso Collection. Dation 1990.

OPP.23:130; MPP:1990.103.22r; P.III:1407; PP.23:012; Z.V:153; BL.96:21.22r; GR.90*:100; PD.06*:129p

Nu drapé assis dans un fauteuil. Paris. Fall/1923. Oil on canvas. 130 x 97 cm. Private collection.

OPP.23:131; P.III:1408; CG.12*:23; RO.17*:173



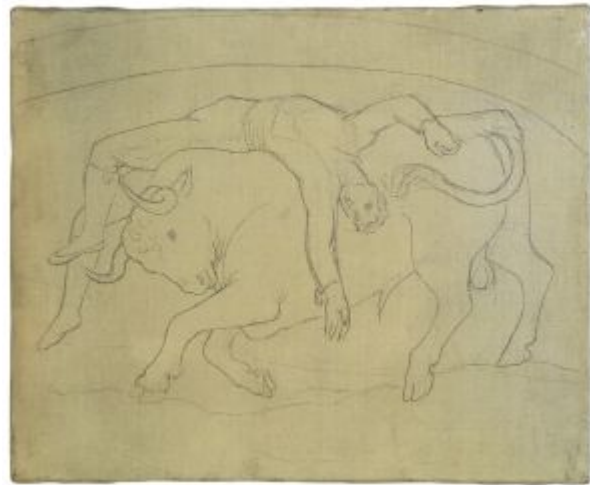


Taureau et cheval. Paris. [Fall/1923]. Pencil on canvas. 22 x 27 cm. Fundación Almine & Bernard Ruiz-Picasso para el Arte.

OPP.23:132; P.III:1409; JC.01b*:14; PT.05*:40

Courses de taureaux (Corrida). Paris. [1921] Fall/1923. Lead pencil on canvas. 22 x 27 cm. Fundación Almine & Bernard Ruiz-Picasso para el Arte.

OPP.23:133; P.III:1410; JC.01b*:11; PT.05*:41





Portrait de femme au col d'hermine (Olga). Paris. [1922~] Fall/1923. Oil on canvas. 73 x 60 cm. Museo Picasso, Málaga. On loan from Fundación Almine & Bernard Ruiz-Picasso para el Arte.

OPP.23:137; P.III:1414; GA.00*:44; GS.03:2.6; JL.13*:6; JR.14*:123p; LW.15*:79p; MA.22a*:72; MG.04c*:9; MG.13*:67p; PA.17b*:169

Courses de taureaux (Corrida). Paris. [1922~1923] Fall/1923. Oil & crayon on wood panel. 13,6 x 19 cm. Musée Picasso, Paris. Dation 1979.

OPP.23:138; MPP:77; P.III:1415; PP.22:273; AB.05a*:72; AB.05b*:n/a; EC.02:411; GG.87:18p; GG.93:2; GP.96:148p; MP.85:73; PA.07a*:148-149p; PA.17b*:167; PA.79a*:123; PA.93a*:40; PT.05:51p; RK.94:146p; UP.00:515; UW.88:55a; WR.80:225p





Tasse de chocolat et croissant. Paris. Fall/1923.
Oil on canvas. 20,3 x 24,7 cm. Sotheby's. #250,
5391, 11/14/85.

OPP.23:140; P.III:1422; PP.23:074; Z.V:72;
JR.62*:3.37

Portrait d'Olga au col de fourrure. Paris.
Fall/1923. Drypoint. 49,5 x 49,2 cm.
Museum Ludwig, Köln. Also Marina Picasso
Collection. (Inv 14951).

OPP.23:142; Ba:109.B; P.III:1424;
AU.89*:25; EC.16*:110; GS.85*:49;
JC.98*:218; JC.98*:218; PA.17b*:109;
WL.17*:6; WO.92*:161; WR.96:324p





Portrait d'Olga. Paris. Fall/1923. Oil on canvas. 27 x 22 cm. Sotheby's. #19, L11002, 02/08/11.

OPP.23:144; P.III:1426; P.IV:133

Portrait d'Olga. Paris. Fall/1923. Oil on canvas. 27 x 22 cm. The Picasso Estate.

OPP.23:145; P.III:1427; P.IV:134





Olga assise. Paris. Fall/1923. Charcoal on paper. 32 x 24,5 [24,7] cm. Private collection, London.

OPP.23:146; P.III:1429; MM.07:163p

Portrait d'Olga. Paris~Antibes. Fall/1923. Oil on canvas. 100 x 81 cm. Louvre Abu Dhabi. Formerly Marina Picasso Collection. (Inv 12326).

OPP.23:147; P.III:1430; PP.23:079; GC.96:186p; JR.14*:119p; MP.01a:21; MP.01b:27; NM.08:22; TO.96b*:163; VR.90*:30; VR.90*:30





Compotier, mandoline, partition et bouteille. Paris. Fall/1923. Oil on canvas. [97] 97,5 x 130 cm. Sotheby's. #28, L14006, 06/23/14. Formerly Galerie Beyeler, Basel.

OPP.23:149; FM:971; P.III:1434; PP.23:246; Z.V:187; BS.67b*:34; MN.75*:17; ZU.00*:14

Tête d'arlequin. Paris. Fall/1923. Oil on canvas. [46 x 38] 46,9 x 39,3 cm. Los Angeles County Museum of Art. (Inv M.2005.70.101). Partial, fractional and promised gift of Janice and Henri Lazarof. Formerly Mrs. Ernest Zeisler Collection, Chicago.

OPP.23:150; FM:967; P.III:1436; PP.23:044; Z.V:62; CH.68a*:28; UP.00:531





Femme nue accoudée. Paris. [Summer/1921] Fall/1923. Pencil & sgraffito on prepared panel. [21,9 x 15,9] 22 x 15,9 cm. Christie's. #510, 19811, 05/14/21. Formerly Christie's. #173, 17659, 11/12/19; James and Marilyn Alsdorf Collection, Chicago.

OPP.23:163; P.III:1420; GP.96:143p; TU.86*:119

La petite cuisine. Paris. Fall/1923. Oil on canvas. 46,4 x 54,6 cm. Wadsworth Atheneum Museum of Art, Hartford, CT. (Inv 1958.220). The Philip L. Goodwin Collection. Gift of James L. Goodwin, Henry Sage Goodwin & Richmond L. Brown.

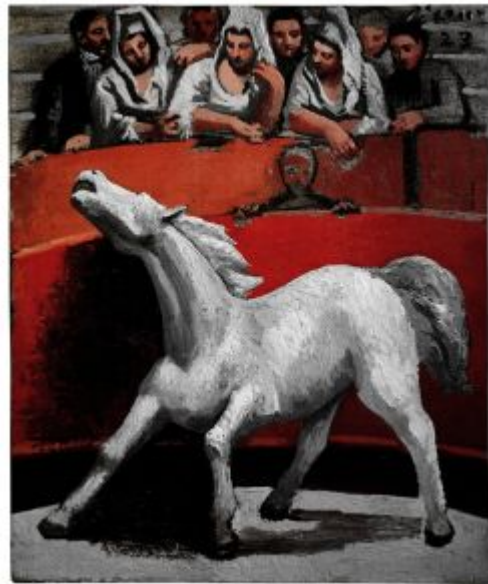
OPP.23:166; PP.23:217; Z.V:69;
GP.32*:127; KZ.32*:130; PH.16b*:60





Femme dans un fauteuil (Sara Murphy). Paris. [Early] Fall/1923. Oil on canvas. [130 x 97] 130,2 x 97,2 cm. The Detroit Institute of Arts. (Inv 70.193). Bequest of Robert H Tannahill.

OPP.23:171; P.III:1403; PP.23:013; Z.V:154; CH.31c*:21; NY.30a*:14; NY.31h*:67



Corrida. Paris. [Winter/1923~1924] Fall/1923. Oil on canvas. 27 x 22 cm. Private collection.

OPP.23:205; P.III:1416; PP.23:243; Z.V:149; AB.69:3a; HT.34*:46; JC.40:128p; PA.07a*:145p



Corrida: cheval blessé. Paris.
[Winter/1923~1924] Fall/1923. Oil on canvas. 19
x 24 cm. Artizon Museum, Tokyo. Ishibashi
Foundation.

OPP.23:206; P.III:1418; PP.23:244; Z.V:147;
JC.40:128p; VM.56:5

La danse (Les trois Grâces). Paris. Fall/1923. Oil
on canvas [OIC]. 27 x 22 cm. Private collection.

OPP.23:207; P.III:1435; PP.23:203; Z.V:148;
CK.04:36p; DC.87:316; EC.02:413; SS.76:291;
YB.08:52p





Femme au turban les bras croisés. Paris. [Fall]/1923. Oil on canvas [OIC]. 116 x 89 cm. Private collection.

OPP.23:261; PP.23:211; Z.V:22; JC.40:124p; LA.41a*:39; NY.23a*:8; PA.24a*:n/a; SF.39b*:39

Deux femmes regardant un modèle nu (II). Paris. [Fall]/1923. Etching & drypoint. 17,8 x 13 cm. Musée Picasso, Paris. Dation 1979.

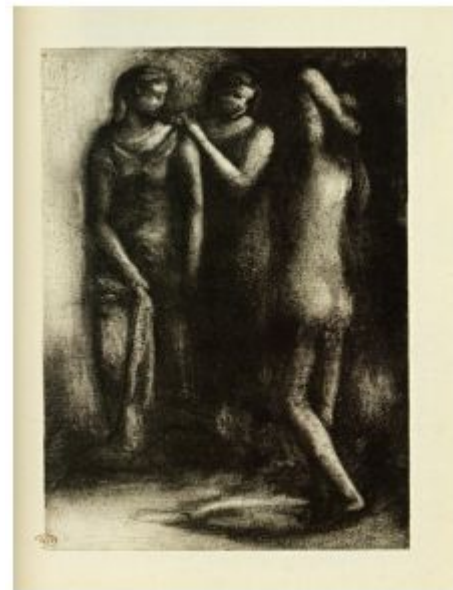
OPP.23:264; Ba:102.2; MPP:2068; CK.04*:33





Deux femmes regardant un modèle nu (III). Paris.
[Fall]/1923. Etching & drypoint. 17,8 x 13 cm. Musée Picasso,
Paris. Dation 1979.

OPP.23:265; Ba:102.3D; MPP:2072; CK.04*:34



Deux femmes regardant un modèle nu (IV). Paris.
[Fall]/1923. Etching & drypoint. 17,8 x 13 cm. Musée
Picasso, Paris. Dation 1979.

OPP.23:266; Ba:102.4; MPP:2074; CK.04*:35



Deux femmes regardant un modèle nu (V). Paris. [Fall]/1923. Drypoint, etching & scraping on Vergé paper. 17,8 x 13 cm. Musée Picasso, Paris. Dation 1979.

OPP.23:267; Ba:102.5C; MPP:2075; CK.04*:36

Nu féminin debout à la draperie. Paris. Fall/1923. Oil on canvas [OIC]. S/U. Private collection.

OPP.23:279; PP.23:221; Z.V:161





Deux femmes regardant un modèle nu. Paris. [1922~]
[Fall]/1923. Etching with drypoint on Montval laid paper, edition
100. 17,7 x 12,7 [17,8 x 13]. Sotheby's. #132, L02192, 07/02/02.

OPP.23:295; B.I:57; Ba:102.6; P.III:1406; UW.88*:82

La coiffure. Paris. Fall]/1923. Wax crayon on paper.
26,1 x 16,7 cm. Musée Picasso, Paris. Dation 1979.

OPP.23:308; MPP:3268





Deux femmes regardant un modèle nu (III). Paris. Fall/1923. Drypoint, etching & scraping on Vergé paper. 17,8 x 13 cm. Musée Picasso, Paris. Dation 1979.

OPP.23:316; Ba:102.3C; MPP:2071

Deux femmes regardant un modèle nu (V). Paris. Fall/1923. Etching & scraping on Vergé paper. 17,8 x 13 cm. Musée Picasso, Paris. Dation 1979.

OPP.23:317; Ba:102.5D; MPP:2076



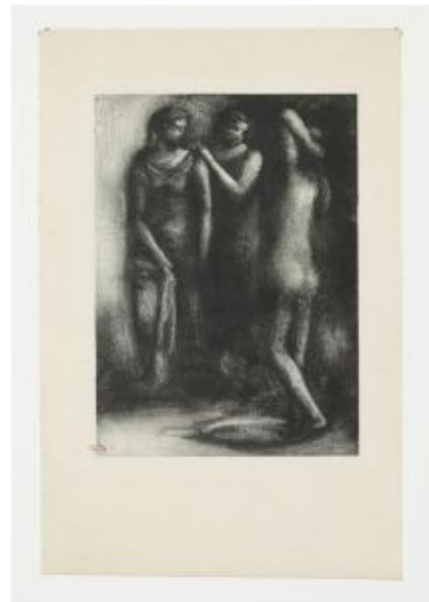


Deux femmes regardant un modèle nu (V). Paris. Fall/1923. Etching & scraping on Vergé paper. 17,8 x 13 cm. Musée Picasso, Paris. Dation 1979.

OPP.23:318; Ba:102.5E; MPP:2077

Deux femmes regardant un modèle nu (III). Paris. Fall/1923. Drypoint, etching & scraping on Vergé paper. 17,8 x 13 cm. Musée Picasso, Paris.

OPP.23:320; Ba:102.3B; MPP:2070.03





Deux femmes regardant un modèle nu (III). Paris. Fall/1923.
Drypoint, etching & scraping on Vergé paper. 27,4 x 17,9 cm. Musée
Picasso, Paris. Dation 1979.

OPP.23:321; Ba:102.3E; MPP:2073

Deux femmes regardant un modèle nu (III).
Paris. Fall/1923. Drypoint, etching & scraping on
Vergé paper. 30 x 24,6 cm. Musée Picasso, Paris.
Dation 1979.

OPP.23:322; Ba:102.3A; MPP:2069





Deux femmes regardant un modèle nu (V). Paris. Fall/1923.
Drypoint, etching & scraping on Vergé paper. 17,8 x 13 cm. Musée
Picasso, Paris. Dation 1979.

OPP.23:323; Ba:102.5B; MPP:2070

Femme retenant son peignoir. Paris. [Fall]/1923.
Graphite. 31 x 24 cm. Private collection.

OPP.23:358; PP.23:204; Z.V:134





Femme nue. Paris. [Fall]/1923. India ink. 108 x 72 cm. Private collection.

OPP.23:359; PP.23:218; Z.V:136

Femme nue. Paris. [Fall]/1923. India ink. 108 x 72 cm. Private collection.

OPP.23:360; PP.23:205; Z.V:137





La coiffure: trois femmes. Paris. [Fall]/1923. Oil on canvas [OIC]. 100 x 81 cm. Private collection.

OPP.23:363; PP.23:202; Z.V:155

Nu couché. Paris. [Fall]/1923. India ink. 17 x 24 cm. Private collection.

OPP.23:365; PP.23:208; Z.V:158





Nu allongé. Paris. [Fall]/1923. India ink. 24,5 x 15,5 cm. Private collection.

OPP.23:366; PP.23:209; Z.V:159

Femme au collier. Paris. [Fall]/1923. India ink. 51 x 23 cm. Private collection.

OPP.23:367; PP.23:213; Z.V:163





Les amoureux. Paris. [Fall]/1923. India ink. 64 x 49 cm. Private collection.

OPP.23:369; PP.23:216; Z.V:166

Tête de jeune fille. Paris. [Fall]/1923. Oil on canvas [Oic]. 35 x 24 cm. Private collection.

OPP.23:370; PP.23:212; Z.V:167





Portrait d'Olga au col de fourrure. Paris.
Fall/1923. Zinc plate for *Portrait d'Olga au col de fourrure*. 50 x 50 cm. Museum Ludwig, Köln. (Inv ML/G 2001/080). Schenkung 2001.

OPP.23:380

Deux femmes regardant un modèle nu. Paris.
[Fall]/1923. Drypoint & etching printed in bistre. 17,8 x 12,8 cm. Sotheby's. #188, N10448, 10/23/20.

OPP.23:416; Ba:102.6B





Deux Femmes regardant un modèle nu (IV/V). Paris. Fall/1923. Drypoint & scraping. 7,4 x 6,9 cm. Musée Picasso, Paris. Dation 1979.

OPP.23:422; Ba:102.4/5; MPP:2078

Olga au col de fourrure. Paris. [February/1921] Fall~Winter/1923. Oil on repainted canvas [Overlayer of *Femme dans un fauteuil (Eva)*]. 116 x 80,5 cm. Musée des Beaux-Arts, Lille. On loan from Musée Picasso, Paris. Jacqueline Roque Picasso Collection. Dation 1990.

OPP.23:015; MPP:1990.9; P.III:1423; PP.23:018; AA.04*:n/a; BD.16*:42; CG.12*:20; GR.90*:5; JR.96:404p; MA.86*:11; MM.07*:68; ND.01*:15; PA.17b*:172; RR.09*:24; WR.96:102p





Récépissé de Picasso à Paul Rosenberg. Paris. 22-October/1923. Ink on paper. S/U. The Morgan Library & Museum, NYC. MA 3500 Rosenberg Collection.

OPP.23:246; CG.93:146

Portrait d'André Breton de trois quart (André Breton, Clair de terre). Paris. [30-October] Fall/1923. Drypoint on copper; Frontispiece for André Breton's book Clair de terre Paris 1923. 31,8 x 23,8 cm. The Museum of Modern Art, NYC. (Inv 350.1948). Gift of Victor S. Riesenfeld.

OPP.23:143; B.I:63; Ba:110; GC:12; MPP:2003.10; P.III:1425; AB.05a:14; BA.23:88p; JL.71:237p; JR.07:244p; JR.21:863p; LO.90c:299p; MC.11:160p; MF.95:51; PA.18e*:53; PP.19:34p; RB.99:120p; SF.09:101p; WR.80:224





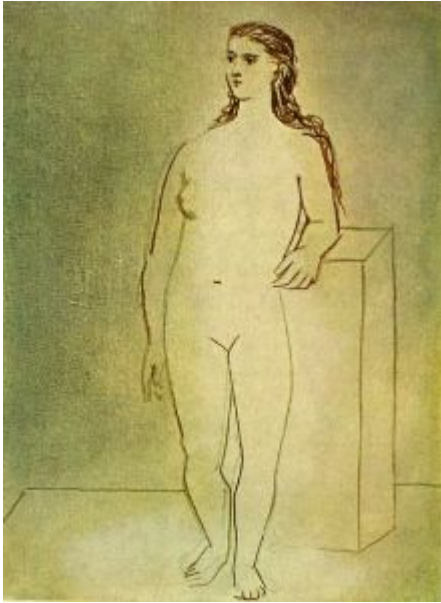
Portrait d'André Breton de trois quart. Paris. 30-October/1923. Drypoint. 14,9 x 10 cm. Musée Picasso, Paris. Dation 1979.

OPP.23:423; MPP:2086

La flûte de Pan. Cap d'Antibes. [Summer] November~December/1923. Oil on canvas. 205 x 174,5 cm. Musée Picasso, Paris. Dation 1979.

OPP.23:001; MPP:79; P.III:1388; PP.23:154; Z.V:141; AB.05b*:96; AB.12:41p; AB.39a*:181; AB.46:127p; AB.57*:n/a; AC.81:108p; AN.18*:35; AP.92:25; BH.06*:261p; CK.04:89p; DB.49:211p; DB.89:89p; DD.61:209; DQ.74:203p; EC.02:395; GB.87:109; GC.96:189p; GP.32*:138; GP.96:147p; HD.01:38; HD.04:31p; IC.05*:37; IW.93:55p; JC.98*:238; JL.06:131p; JL.71:136p; JM.93:66p; JR.07:n/a; JV.06:65p; KS.62:19p; KS.89:189; KZ.32*:129; LA.16*:116p; LE.21:20p; LP.99:111p; MA.08a*:n/a; MG.18:56p; MN.80*:n/a; MP.85:76; MR.13:32p; NH.94:41p; NM.08:20; NW.70:179; NY.21g:54p; NY.41b*:n/a; NY.44b*:n/a; OD.96:54p; OW.13:57p; PA.20j*:149; PA.79a*:125; PD.09:229p; PD.19:40p; RB.99:79p; RO.17*:172; RP.60*:104; RR.76:61; RS.88:63p; SG.06:26p; SN.92:24; TC.13:6.15; TL.95*:12; TV.06*:15; UP.00:527; UW.88:56a; VB.99:31p; VR.90:50p; WF.86:502; WR.80*:239p; WR.96:41p; WS.02:121p; WW.91:299p





Femme nue debout. Paris. 7-November/1923. Oil on canvas. 33 x 24 cm. The Picasso Estate.

OPP.23:008; P.III:1413; PP.23:220; DD.61:73p

Olga assise. Paris. 9-November/1923. Sepia & oil on canvas. 27 x 22 cm. Museo Picasso, Málaga. Gift of Bernard Ruiz-Picasso.

OPP.23:135; MPM:2.135; P.III:1412; DP.20*:51; GS.03:1.12; MA.22a*:71; NC.17*:68





Portrait d'Olga. Paris. 10-November/1923. Oil & turpentine on canvas. 33 x 24 cm. Museo Picasso, Málaga. Depósito del Ministerio de Cultura. (Inv P9.1).

OPP.23:024; P.III:1421; PP.23:222; Z.IV:438; DP.20*:52; GP.32*:n/a; HD.01:34; JL.13*:10; KZ.32*:123; LO.18*:n/a

Nature morte: pain et fromage. Paris. 30-November/1923. Oil & sepia wash on canvas. 19 x 24 cm. The Picasso Estate.

OPP.23:148; P.III:1432; LE.07*:14





Le déjeuner de l'ouvrier (Quart de brie). Paris. 30-November/1923. Oil on canvas. 24,2 x 33 cm. Christie's. #41, 7058, 06/21/05. Formerly Sotheby's. #438, 6489, 11/04/93; Stanley Seeger Collection.

OPP.23:251; PP.23:075; Z.V:92

Corrida: taureau et cheval blessé. Paris. [Winter]/1923~1924. Pencil on back of invitation card. 11,7 x 14,2 cm. Musée Picasso, Paris. Dation 1979.

OPP.23:046; MPP:997; PP.23:245; JC.01b*:18; MP.88:888; PA.07a*:138p; PA.93a*:46; PD.06*:n/a





Masque et verre. Paris. Winter/1923~1924. India ink & oil on wood. 22 x 33 cm. The Picasso Estate.

OPP.23:141; P.III:1442

Gant et masque. Paris. Winter/1923~1924. Oil on canvas. 38 x 46 cm. Catherine Hutin-Blay Collection, Paris. Formerly Jacqueline Roque Picasso Collection.

OPP.23:152; P.III:1438; DO.07*:182





Composition au masque et gant. Paris.
Winter/1923~1924. Oil on canvas. 35 x 27 cm.
Catherine Hutin-Blay Collection, Paris. Formerly
Jacqueline Roque Picasso Collection.

OPP.23:154; P.III:1440; DO.07*:180;
PA.18e*:93

Masque et gant. Paris.
Winter/1923~1924. Oil on canvas. 24 x 33
cm. Catherine Hutin-Blay Collection, Paris.
Formerly Jacqueline Roque Picasso
Collection.

OPP.23:155; P.III:1441; DO.07*:181;
LM.17*:n/a





Femme au voile (Olga). Paris. [Winter/1923~1924 [Early/1924].
Sanguine on paper. 107 x 71 cm. Museum Sammlung Rosengart,
Luzern. Siegfried & Angela Rosengart Collection.

OPP.23:157; P.III:1437; PP.23:236; Z.V:172; RD.00*:98;
UW.88*:69

Femme assise au chapeau. [Paris].
[Winter/1923~1924]. Charcoal & chalk on canvas. 116 x
72 cm. Private collection.

OPP.23:202; PP.23:229; Z.V:162; UP.00:503





Femme au chapeau bleu garni d'une guirlande. Paris. Winter/1923~1924. Pastel on paper. 64,2 x 47,5 cm. Sotheby's. #5, N08485, 11/03/08. Formerly Shigetaro Fukushima Collection.

OPP.23:204; PP.23:228; Z.V:181

Portrait de Paulo. Paris. Winter1923~1924. Pencil on paper. 36 x 25,5 cm. Private collection.

OPP.23:284; DO.07*:183





Femme au voile. Paris. [Winter]/1923~1924. India ink. 108 x 72 cm. Private collection.

OPP.23:287; PP.23:234; Z.V:169; UW.88:69a

Femme nue accoudée. Paris. Winter/1923~1924. India ink. 108 x 72 cm. Private collection.

OPP.23:371; PP.23:219; Z.V:168





Nu debout les bras croisés. Paris. 25-December/1923. India ink.
108 x 72 cm. Private collection.

OPP.23:361; PP.23:232; Z.V:138

Nu debout les bras croisés. Paris. 25-December/1923.
India ink. 108 x 72 cm. Private collection.

OPP.23:362; PP.23:233; Z.V:139





Nu debout. Paris. 25-December/1923. India ink. 116 x 72 cm.
Private collection.

OPP.23:364; PP.23:231; Z.V:157

Courses de taureaux (Corrida). Paris.
[Fall] 31-December/1923. Pencil [charcoal]
on canvas. 22 x 27,8 cm. Dian and Andrea
Woodner Collection, NY.

OPP.23:043; P.III:1411; PP.23:239;
PA.93a*:43; UW.88*:55





Courses de taureaux (Corrida). Paris. 31-December/1923. Pencil on paper. 19 x 21 cm. Christie's. #419, 6737, 06/26/03. Formerly Marina Picasso Collection. (Inv 3147).

OPP.23:045; PP.23:237; Z.V:143; BS.23a*:37; JC.01b*:19; MU.86*:46; NY.88d*:66; NY.91a*:n/a; PA.93a*:34; PA.93a*:45

Guillaume Apollinaire de Pape (André Billy, Apollinaire vivant). Paris. 1923. Ink reproduction after original drawing. S/U. Private collection.

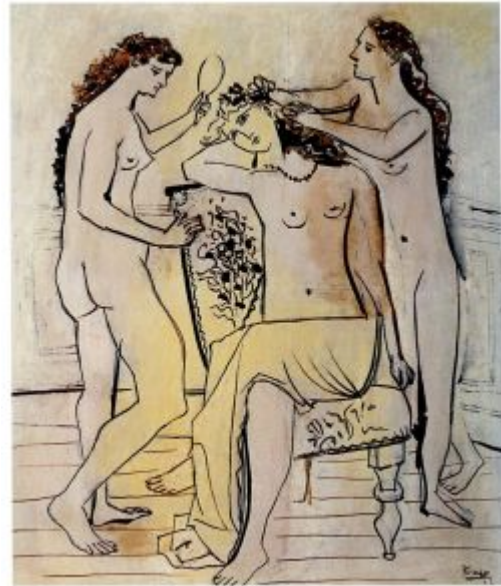
OPP.23:038; WR.96:189p





La coiffure. Paris. 1923. Lithograph on Van Gelder Zonen, edition 50 [After *La coiffure*. 26,3 x 16,5 cm. Graphische Sammlung der ETH Zürich. Also Weatherspoon Art Museum, The University of North Carolina at Greensboro. Bequest of Etta and Claribel Cone, 1949.

OPP.23:052; B.I:64; FM.70:14; MD.02*:154p; UW.88*:83; VO.16*:50p



La toilette de Venus. Paris. 1923. Oil, brush & ink on canvas. 99,7 x 80,9 cm. Sotheby's. 11/97.

OPP.23:083

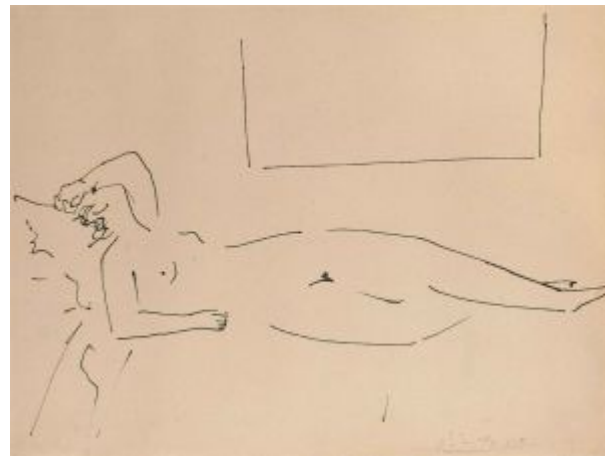


Femme et enfant. Paris. 1923. Wax caryon on paper. 19,5 x 29 cm. Musée Picasso, Paris. Dation 1979.

OPP.23:093; MPP:3270

Nu féminin allongé. Paris. 1923. Pen & ink on paper. 23,8 x 31 cm. Christie's. #206, 7953, 02/10/11.

OPP.23:216; PP.23:157a





Femme nue assise les mains jointes. Paris. [1923]. Ink on paper. 25,8 x 34,7 cm. Sotheby's. #3, PF1306, 06/06/13. Formerly Sotheby's. #80, PF1014, 06/03/10.

OPP.23:221; PP.23:087; Z.V:21

Femme debout. [Paris]. 1923. Ink on paper. S/U. The Picasso Estate. Formerly Pierre Le Guennec Collection, France.

OPP.23:227





Pomme et verre. Paris. 1923. Oil & sand on canvas. 22,6 x 27,6 cm. Sotheby's. #143, L18004, 03/01/18.

OPP.23:253; PP.23:060; Z.V:76; LO.31*:24; NB.96:27; TR.70*:4919; TR.72*:3; TR.96*:54

Femme nue allongée. Paris. 1923. India ink on paper. 23,5 x 32 cm. Artcurial. #1, 2456, 12/02/13.

OPP.23:269; PP.23:116; Z.V:27





Femme assise. Paris. 1923. India ink on paper cut-out. [14,5 x 21,8] 15 x 22,2 cm. Sotheby's. #44, L20010, 06/18/20. Formerly Marina Picasso Collection.

OPP.23:275

Nu couché et tête. Paris. 1934. India ink on paper. 15 x 24,3 cm. Marina Picasso Collection.

OPP.23:276



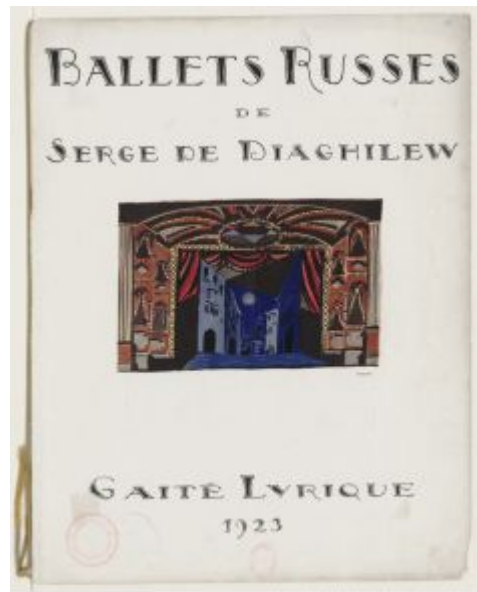


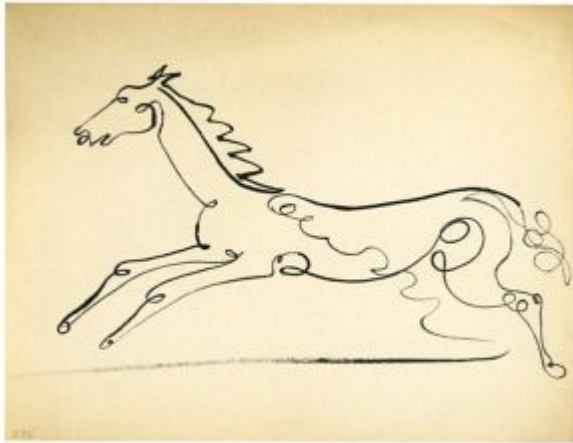
Arlequin. Paris. 1923. Ink (Published in Alfar). S/U. Private collection.

OPP.23:277

Ballets Russes de Serge de Diaghilew - Gaité Lyrique. Paris. 1923. Print [After *Étude de décor pour le ballet Pulcinella*]. S/U. Private collection.

OPP.23:280; BH.06*:144p; NM.08:63p; VR.90:138p





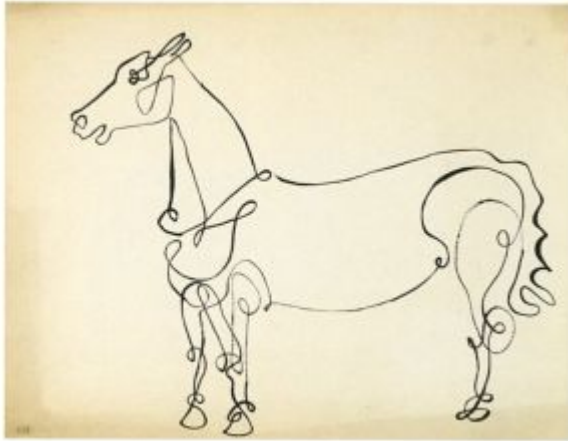
Cheval. Paris. 1923. Ink on paper [Reverse of *Cheval*]. 24 x 31 cm. Private collection.

OPP.23:281; DO.07*:177

Cheval. Paris. 1923. Ink on paper [Obverse of *Cheval*]. 24 x 31 cm. Private collection.

OPP.23:282; DO.07*:178





Cheval. Paris. 1923. Ink on paper. 24 x 21 cm.
Private collection.

OPP.23:283; DO.07*:179

**Olga Khokhlova dans le salon de 23,
rue La Boétie.** Paris. [1923]. Modern print
from original negative. 6,9 x 12,1 cm.
Fundación Almine & Bernard Ruiz-Picasso
para el Arte.

OPP.23:285; EC.16*:112; MA.22a*:58





Olga Picasso. Paris. 1923. Photograph. 10,9 x 8,4 cm. Private collection.

OPP.23:291; PA.17b:35p

Olga Picasso. Paris. 1923. Gelatin silver print. 10,9 x 8,4 cm. Fundación Almine & Bernard Ruiz-Picasso para el Arte.

OPP.23:292; PA.17b*:281





Carte postale adressée à Paul Rosenberg: cheval. Paris. [1923]. Ink on postcard. S/U. Bietigheimer Auktionshaus Gärtner. #27324, 140(2), 2015.

OPP.23:293

La couronne de fleurs. Paris. 1923. Lithograph. 29,7 x 23,8 cm. Musée Picasso, Paris. Dation 1979.

OPP.23:296; B.I:1313; MPP:3267





Portrait d'André Breton aux bras croisés. Paris. 1923. Drypoint.
14,6 x 9,9 cm. Musée Picasso, Paris. Dation 1979.

OPP.23:307; MPP:2087; PA.21g*:120p

Nu de dos avec un linge. Paris. 1923. Etching on Whatman
paper. 15,2 x 6,3 cm. Musée Picasso, Paris. Dation 1979.

OPP.23:312; MPP:2065





Les trois Grâces (I). Paris. 1923. Etching on Vergé paper. 11,8 x 6 cm. Musée Picasso, Paris. Dation 1979.

OPP.23:313; MPP:2080

Les trois amies (II). Paris. 1923. Etching on Vélín Arches paper. 41,6 x 29,8 cm. Musée Picasso, Paris. Dation 1979.

OPP.23:314; MPP:2102; PA.79a*:n/a





Les trois amies (II). Paris. 1923. Negative etching on Vélín Arches paper. 41,6 x 29,8 cm. Musée Picasso, Paris. Dation 1979.

OPP.23:315; Ba:117.IIa; MPP:2103; PA.79a*:n/a

Nu de dos avec un linge. Paris. 1923. Drypoint. 24,9 x 15,7 cm. Musée Picasso, Paris. Dation 1979.

OPP.23:324; MPP:2066





La toilette. Paris. 1923. Wax crayon on paper. 27 x 20,4 cm.
Musée Picasso, Paris. Dation 1979.

OPP.23:325; MPP:3269

Lettre de l'artiste à Polunin. Paris. 1923. Pen & ink on paper.
19 x 11,5 cm. Sotheby's. #368, L20004, 02/05/20.

OPP.23:368

merci mes chers amis
du cheval. mon fils
est dans la joie.
Ne voudriez vous pas
venir demain dimanche
après midi ? si oui
nous serons très
heureux.
Bonne nuit et
bonne nuit
Picasso
PARIS
23 A. la Baette



Les trois grâces I. Paris. 1923. Etching. 12 x 6 cm. Sotheby's. #2, N/A, 03/27/19.

OPP.23:378; Ba:104

Couverture (André Breton, Clair de terre). Paris. 1923. Mixed media. 28 x 18,5 cm. Christie's. #139, 17875, 07/05/19.

OPP.23:379





Nature morte: verre et pêche. Paris. [1923]. Oil & oleoresinous (est.) paint on canvas. 22 x 27 cm. The Barnes Foundation, Merion, PA. (Inv BF.457).

OPP.23:381

Huit Études d'homme. Paris. 1923. Pen & ink on paper. 24,3 x 31,9 cm. Sotheby's. #278, L21004, 03/19-26/21. Formerly Marina Picasso collection.

OPP.23:417





Nu debout (baigneuse). [Cap d'Antibes]. 1923. Pen & ink on paper. 28,8 x 22,4 cm. Sotheby's. #225, L22004, 03/03/22. Formerly Pierre Le Guennec Collection, France.

OPP.23:418

Femme et deux hommes sur la plage. [Cap d'Antibes]. 1923. Pen & ink on paper. 26 x 35 cm. Sotheby's. #226, L22004, 03/03/22. Formerly Pierre Le Guennec Collection, France.

OPP.23:419





Nature morte. Paris. 1923. Pochoir. 19,8 x 15,3 cm. Musée Picasso, Paris. Dation 1979.

OPP.23:424; MPP:3518

Portrait d'Olga au col de fourrure. Paris. 1923.
Drypoint. 49,5 x 49 cm. Musée Picasso, Paris. Dation
1979.

OPP.23:427; Ba:109; MPP:2085





Nu aux bras croisés. Paris. [1923]. Pen & ink on paper. 35,2 x 26,1 cm. Sotheby's. #N18, L22005, 05/04/22. Formerly Pierre Le Guennec Collection, France.

OPP.23:433

Nu assis. Paris. [1923]. Pen & ink on paper. 35,1 x 26 cm. Sotheby's. #N19, L22005, 05/04/22. Formerly Pierre Le Guennec Collection, France.

OPP.23:434





Trois grâces (Trois femmes). Paris. [1923]. Pen & ink on paper. 27,6 x 21,8 cm. Sotheby's. #24, L22005, 05/04/22. Formerly Pierre Le Guennec Collection, France.

OPP.23:435

Étude de personnages. Paris. 1923. Brush & ink on paper. 10,5 x 19 cm. Sotheby's. #27, L22005, 05/04/22 Formerly Pierre Le Guennec Collection, France.

OPP.23:436





Tête de femme. Paris. 1923. Pen & ink on paper [Obverse of *Étude de personnages*]. 13,9 x 10,7 cm. Sotheby's. #25, L22005, 05/04/22. Formerly Pierre Le Guennec Collection, France.

OPP.23:437

Tête de femme. Paris. 1923. Pen & ink on paper [Reverse of *Tête de femme*]. 13,9 x 10,7 cm. Sotheby's. #25, L22005, 05/04/22. Formerly Pierre Le Guennec Collection, France.

OPP.23:438



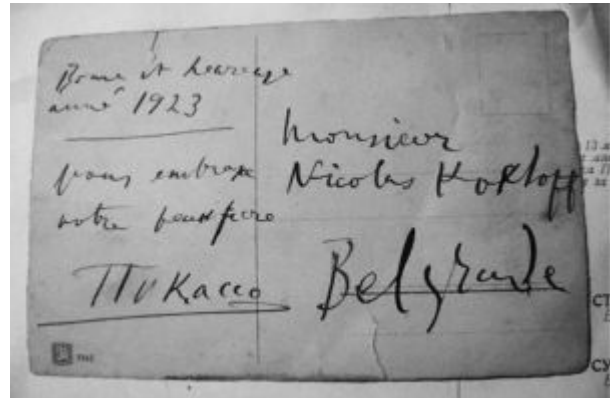


Portrait de André Breton. Paris. 1923. Reproduction [After *Portrait d'André Breton de trois quart (André Breton, Clair de terre)*]. 17,8 x 18,3 cm. Sotheby's. #117, PF1503, 06/25/15.

OPP.23:448

Carte postale adressée à Nikolaj Khokhlov. Paris. 1923. Ink on postcard. S/U. Private collection.

OPP.23:449





Nature morte aux poires. Paris. 1923. Gouache on pochoir on Vellum paper. 29 x 37 cm. Musée Picasso, Paris. Dation 1979.

OPP.23:454; MPP:3515; BU.22*:105

Nature morte avec poires. Paris. 1923. Pochoir printed in colors [After *Nature morte aux poires*]. 26,7 x 35,6 cm. Sotheby's. #169, N08544, 04/30/09.

OPP.23:455





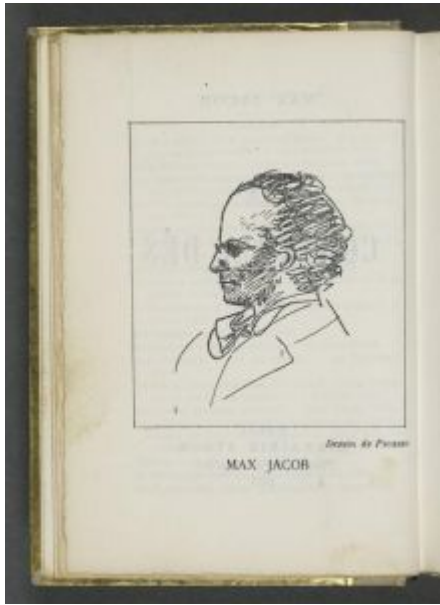
Femme au turban (Sara Murphy). [Paris]. 1923 [Fall/1925].
Bistre ink on paper. [35 x 25] 107,7 x 71,7 cm. Sotheby's. #112,
L23006, 06/27/23. Formerly Christie's. #11, 6590, 06/25/02.

OPP.23:036; PP.25:109; Z.V:369; AV.98:25; LU.64*:244;
WR.96*:53p

Buste de femme. Paris. [1922~] 1923. Etching &
scraping. 11,8 x 7,8 cm. Musée Picasso, Paris. Dation
1979.

OPP.23:421; Ba:73.1; MPP:2032; BU.22*:107





Portrait de Max Jacob (Max Jacob, Le Cornet à dés). Paris. 1923~1924. Reproduction [After *Portrait de Max Jacob*]. S/U. Musée Picasso, Paris. Achat à la vente Tajan à Drouot, 2003.

OPP.23:160; MPP:2003.15; HS.94*:261; WR.96:193p

Femme au voile debout, deux hommes assis. Paris. 1923~1924. India ink on paper. 116 x 72 cm. Mr. and Mrs. Hugh Chisholm Collection, NY.

OPP.23:247; PP.23:235; Z.V:171; JR.62*:4.37; UW.88:69b





Buste de femme. Paris. 1923~1924. Monotype, printed on Whatman paper. 17,8 x 12,8 cm. Musée Picasso, Paris. Dation 1979.

OPP.23:268; MPP:3175; CK.04*:38

Deux femmes nues. Paris. 1923~1924. Brush & ink on paper. 108 x 71,1 cm. Sotheby's. #330, 7050, 11/13/97.

OPP.23:270; PP.23:230; Z.V:170; LU.64*:n/a





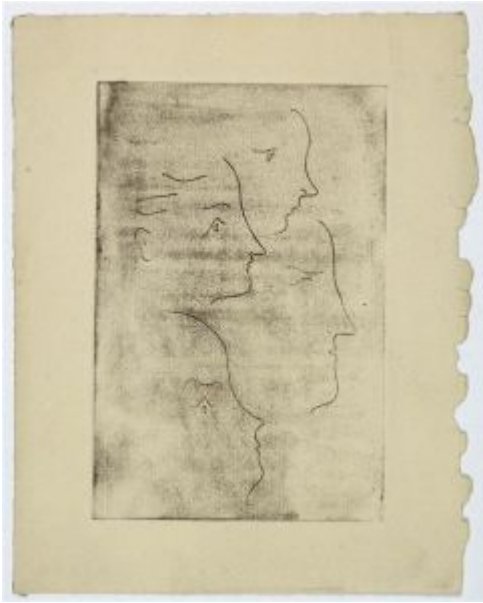
Quatre profils. Paris. 1923~1924. Zinc plate. 11,8 x 7,8 cm.
Musée Picasso, Paris. Don des héritiers Picasso en 1982.

OPP.23:306; MPP:1982.11

Profil (II). Paris. 1923~1924. Etching on Ingres paper.
11,7 x 7,8 cm. Musée Picasso, Paris. Dation 1979.

OPP.23:310; MPP:2036





Quatre profils. Paris. 1923~1924. Etching on Ingres paper.
11,8 x 7,8 cm. Musée Picasso, Paris. Dation 1979.

OPP.23:311; MPP:2037